

Serial No.	H-V003-E-12
------------	-------------

contents

3-Way Ball Valve Type 23

User's Manual



(1) Be sure to read following warranty clauses of our product	1
(2) General operating instructions	2
(3) General instruction for transportation, unpacking and storage	3
(4) Name of parts	4
(5) Working pressure vs. temperature	6
(6) Specification of limit switch	7
(7) Installation procedure	7
(8) Connection of limit switch procedure	12
(9) Operating procedure	14
(10) Method of adjusting face pressure between ball and seat	15
(11) Disassembling method for replacing parts	16
(12) Mounting actuator	17
(13) Inspection items	18
(14) Troubleshooting	18
(15) Handling of residual and waste materials	18

(4) Name of parts

Nominal size 15-50mm (1/2"-2")

No.	DESCRIPTION	No.	DESCRIPTION
[1]	Body	[8]	O-ring (A)
[2]	Ball	[9]	O-ring (B)
[3]	Carrier	[10]	O-ring (C)
[4b]	End Connector (Flange End Type)	[11]	O-ring (D)
[4c]	End Connector (Socket End Type)	[12]	O-ring (E)
[4d]	End Connector (Threaded End Type)	[13]	Stop Ring
[4e]	End Connector (Spigot End Type)*	[14]	Handle
[5]	Union Nut	[15]	Tapping Screw (A)
[6]	Stem	[19]	Extension Stem
[7]	Seat	[19a]	Tapping Screw (B)

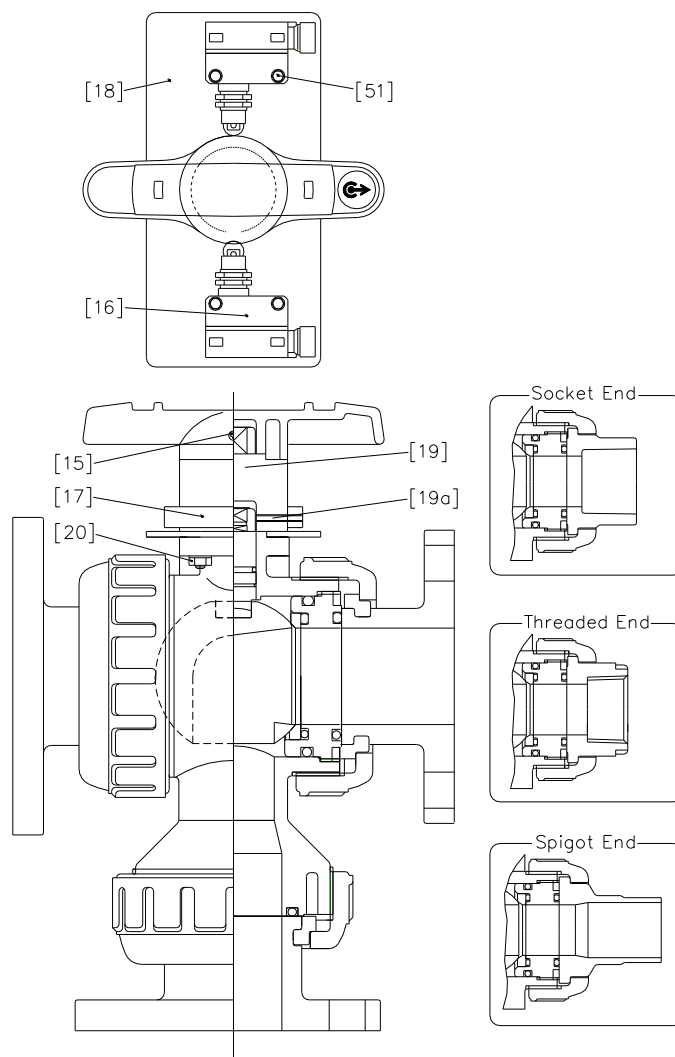
*Nominal size of 32mm (1 1/4") is excluded.

Nominal size 65-100mm (2 1/2"-4")

No.	DESCRIPTION	No.	DESCRIPTION
[1]	Body	[8]	O-ring (A)
[2]	Ball	[9]	O-ring (B)
[3]	Carrier	[10]	O-ring (C)
[4b]	End Connector (Flange End Type)	[11]	O-ring (D)
[4c]	End Connector (Socket End Type)	[12]	O-ring (E)
[4d]	End Connector (Threaded End Type)	[13]	Stop Ring
[4e]	End Connector (Spigot End Type)*	[14]	Handle
[5]	Union Nut	[15]	Tapping Screw (A)
[6]	Stem	[19]	Extension Stem
[7]	Seat	[19a]	Tapping Screw (B)

*Nominal size of 65mm (2 1/2") is excluded.

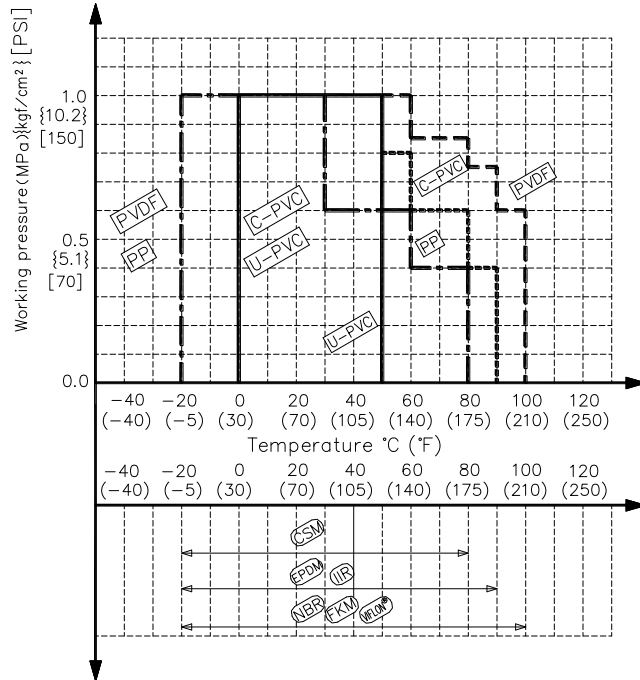
Nominal size 15-100mm (1/2"-4") with limit switch (SL1-A) (option)



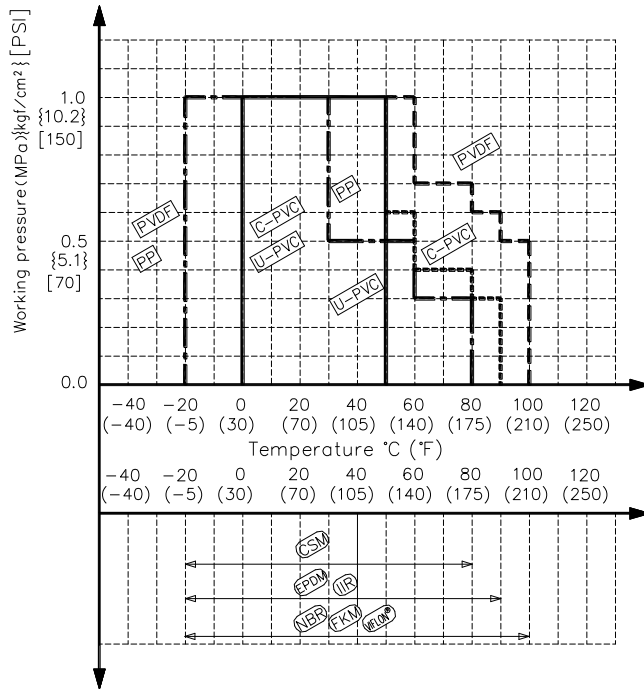
No.	DESCRIPTION	No.	DESCRIPTION
[15]	Tapping Screw (A)	[19]	Extension Stem
[16]	Limit Switch	[19a]	Tapping Screw (B)
[17]	Limit Switch Rod	[20]	Bolt•Nut (A)
[18]	Bracket (A)	[51]	Bolt•Nut (F)

(5) Working pressure vs. temperature

Nominal size: 15mm-50mm (1/2"-2")



Nominal size: 65mm-100mm (2 1/2"-4")



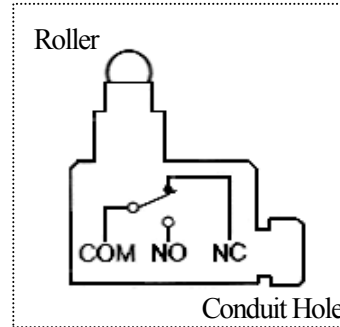
(6) Specification of limit switch (option)

Nominal Size	Type Code	Protection Grade
15-100mm (1/2"-4")	SL1-A	IP67

Limit Switch Rating

Rate Voltage (V)	Resistive Load (A)	Inductive Load (A)
AC125	5	3
AC250	5	3
DC8	5	3
DC14	5	3
DC30	5	3
DC115	0.5	0.1
DC230	0.25	0.05

Connection Diagram



(7) Installation procedure

- Warning** (Warning icon) - Be sure to conduct a safety check on all hand and power tools to be used before beginning work.
- Warning** (Warning icon) - Wear protective gloves and safety goggles as fluid remain in the valve even if the pipeline is empty. (You may be injured.)
- Caution** (Caution icon) - When installing a pipe support by means of a U-band or something similar, take care not to over-tighten. (Excessive force may damage the pipe.)
- Caution** (Caution icon) - Take care not to over-tighten the Union Nut. (The valve can be damaged.)
- Caution** (Caution icon) - Do not use the pipe wrench. (The valve can be damaged.)
- Important** (Important icon) - When installing pipes and valves, ensure that they are not subjected to tension, compression, bending, impact, or other excessive stress.
- Important** (Important icon) - When installing, disassembling, or reassembling the piping, fix the End Connector.
- Important** (Important icon) - Before a water test, be sure that the Union Nut is tightly fastened.
- Important** (Important icon) - Fasten the Union Nut while avoiding the parallelism and axial misalignment of the flange surface.
- Important** (Important icon) - When connecting an ASAHI AV Valve to metal piping, take care not to let the pipe stress on the ASAHI AV Valve.

3-Way Ball Valves Type 23**ASAHI YUKIZAI CORPORATION**

Distributor

<http://www.asahi-yukizai.co.jp/en/>