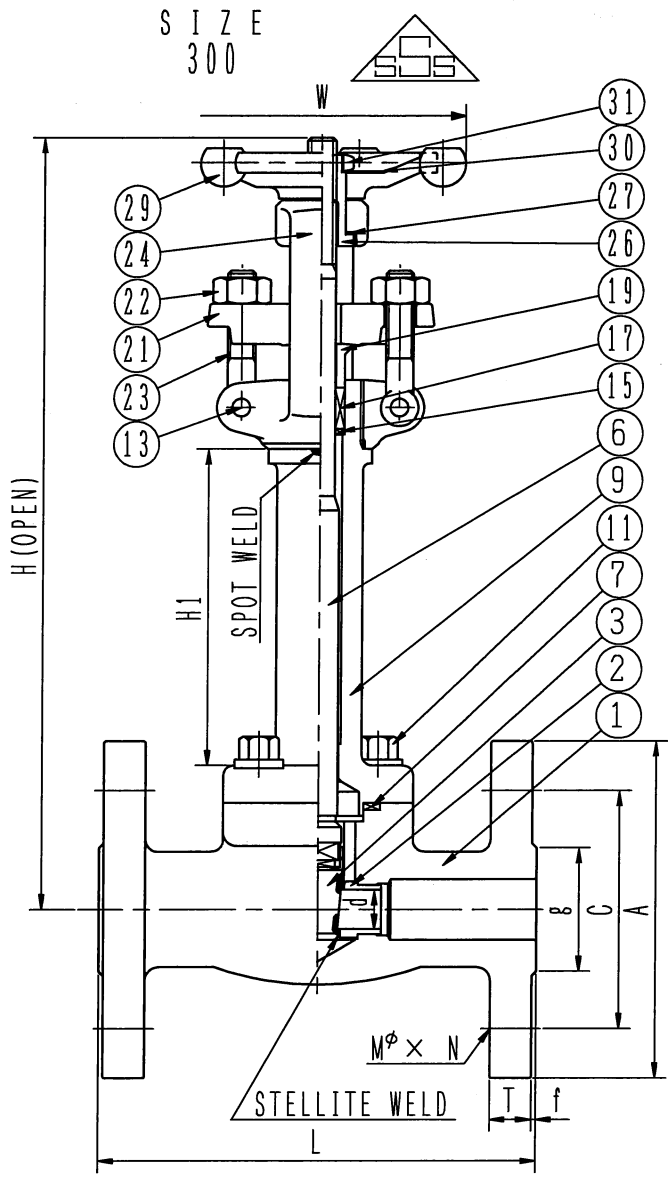


BODY MARKING
S I Z E
300



DIMENSIONS		mm				
S I Z E	(A)	15A	20A	25A	40A	50A
	(B)	1/2B	3/4B	1B	1 1/2B	2B
d		13.6	13.6	19.0	31.2	36.5
L		140	152	165	190	216
A		95	115	125	155	165
C		66.7	82.6	88.9	114.3	127
g		34.9	42.9	50.8	73.0	92.1
T		12.7	14.3	15.9	19.1	20.7
f		2.0	2.0	2.0	2.0	2.0
Mφ x N		16 x 4	19 x 4	19 x 4	22 x 4	19 x 8
W		100	100	125	160	180
H ₁		160	160	180	180	200
H		334	334	392	435	489
WEIGHT (Kg)		5.3	5.9	9.3	16.0	21.3

DRAWING NO.	L414EA502-2A
FIG NO.	L414EA

NO.	NAME OF PARTS	ASTM MATERIAL	PIE -CE	REMA -RK
31	LOCK NUT	A108 1020	1	
30	NAME PLATE	ALUMINUM P.	1	
29	HANDWHEEL	A47	1	
27	SLEEVE WASHER	A276 430	2	
26	SLEEVE	A276 403	1	NITRID-ING
24	YOKE	A182 F304	1	
23	EYE BOLT	A276 304	2	
22	EYE BOLT NUT	A276 304	2	
21	GLAND FLANGE *	A351 CF8	1	
19	GLAND	A276 304	1	
17	GLAND PACKING	GRAFOIL	1Set	
15	PACKING RING	A276 304	1	
13	EYE BOLT PIN	A276 304	2	
11	BONNET BOLT	A193 B8	4	
9	BONNET	A182 F304	1	
7	GASKET	GRAFOIL SPIRAL WOUND	1	
6	STEM	A276 304	1	
3	DISC	A276 304	1	STELLITE WELD
2	BODY SEATRING	A276 304	2	STELLITE WELD
1	BODY	A182 F304	1	

TITLE			
API602			
FORGED STEEL LONG BONNET			
GATE VALVE			
FLANGED END ASME 300 (RF)			
WATER		AIR	
BODY T.P.	7.5 MPaG	SEAT T.P.	0.6 MPaG
REMARK			
K.OTSUKA	K.OTSUKA	T.ANDOU	2012.10
APPD	CHKD	DRAWN	DATE