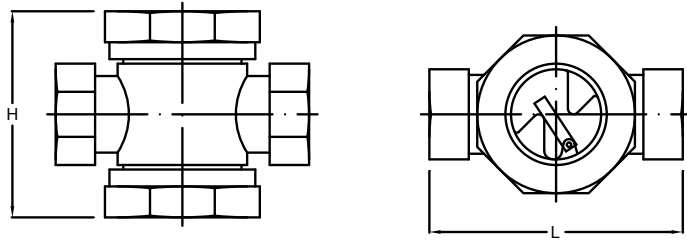




SIGHT GLASS

ISO 9001



- Please name the model No. (SK-B1) when negotiation.
- Thread ends to BS21 or ANSI B2.1
- Usage Scope: Steam, General Liquid.

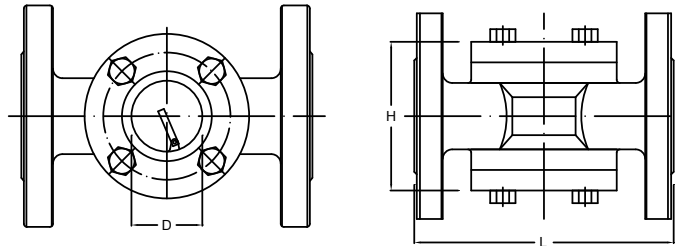
Working Pressure : 0.35 ~ 7 kg/cm²
 Working Temp. : 220°C

Dimension		mm					
Size	inch	1/2	3/4	1	1.1/4	1.1/2	2
	mm	15	20	25	32	40	50
L		120	120	138	145	145	145
H		100	100	105	135	135	145
weight/kgs		1.85	1.86	2.10	3.11	3.20	3.80

Material

Model	SK-B1
Body	CAST IRON
Main Part	BRONZE

SIGHT GLASS



- Please name the model No. (SK-B2, SK-304B2, SK-316B2) when negotiation.
- End Flange Dimensions to JIS 10K or ANSI 150 LBS.
- Usage Scope: Steam, General Liquid.

Working Pressure : 0.35 ~ 7 kg/cm²
 Working Temp. : 220°C

Dimension		mm											
Size	inch	1/2	3/4	1	1.1/4	1.1/2	2	2.1/2	3	4	5	6	8
	mm	15	20	25	32	40	50	65	80	100	125	150	200
L		130	130	170	200	200	220	270	270	320	380	420	500
H		100	100	100	125	125	125	167	180	210	270	280	345
D		40	40	40	50	50	50	85	85	110	130	160	160
Wt. (kgs)	FC	3.20	3.25	5.90	7.00	8.10	9.10	15.5	16.1	25.0	31.8	44.8	
	304	3.00	3.10	5.60	6.85	6.90	8.30	15.4	16.6	25.9	33.5	48.5	

Material

Model	SK-B2	SK-304B2	SK-316B2
Body	CAST IRON	SUS 304	SUS 316
Main Part	SUS 304	SUS 304	SUS 316