

317[®] Stainless Steel / Iron Valve

ISO 9001



TN323

T-ONE-S (MFG) TRADING INC.

Cat. Sep06

CARBON STEEL NEEDLE VALVE
3000 LBS
 BODY: WCB
 SIZE: 1/4"~1"

MODEL: ND-601



ST.ST.304/316 NEEDLE VALVE
3000 LBS / 6000 LBS
 BODY: SUS304 / SUS316
 SIZE: 1/4"~1"

MODEL: ND-604 / ND-606



ST.ST.316 WAFER CHECK VALVE
SINGLE DOOR TYPE
 BODY: SUS316
 SEAT: NBR. (VITON SEAT)
 SIZE: 2"~20"

MODEL: SS316-SC / SS316-SCV



CAST IRON WAFER CHECK VALVE
SINGLE DOOR TYPE
 BODY: CAST IRON
 SEAT: NBR
 SIZE: 2"~20"

MODEL: CI-SC

CAST STEEL WAFER CHECK VALVE
SINGLE DOOR TYPE
 BODY: WCB
 SEAT: NBR
 SIZE: 2"~20"

MODEL: WCB-SC

CAST IRON DUAL PLATE CHECK VALVE
WAFER TYPE API-594
 CLASS 10K, 125 LBS, PN10, PN16.
 BODY: CAST IRON / FCD
 PLATE: BRONZE
 SIZE: 2"~24"

MODEL: WCV-12U



CAST IRON DUAL PLATE CHECK VALVE
WAFER TYPE API-594
 CLASS 10K, 125 LBS, PN10, PN16.
 BODY: CAST IRON / FCD
 PLATE: SUS304 / SUS316
 SIZE: 2"~24"

MODEL: WCV-124 / WCV-126



WCB DUAL PLATE CHECK VALVE
WAFER TYPE API-594
 CLASS 10K, 125 LBS, PN10, PN16.
 BODY: WCB
 PLATE: SUS304 / SUS316
 SIZE: 2"~24"

MODEL: WCV-WCB-134



S.S.304/316 DUAL PLATE CHECK VALVE
WAFER TYPE API-594
 CLASS 10K, 125 LBS, PN10, PN16.
 BODY: SUS304 / SUS316
 PLATE: SUS304 / SUS316
 SIZE: 2"~24"

MODEL: WCV-134 / WCV-136



CAST IRON GATE VALVE CLASS 10K

NON-RISING STEM. (N.R.S.)
FLANGED END TO JIS 10K, DRILLED.
STEM: SS410 (SS304)
SIZE: 2"~12"

MODEL: CI-12N/CI-2NS



CAST IRON GATE VALVE CLASS 10K

OUTSIDE SCREW AND YOKE.
FLANGED END TO JIS 10K, DRILLED.
STEM: SS410 (SS304)
SIZE: 2"~12"

MODEL: CI-12Y/CI-2YS



CAST IRON GLOBE VALVE 10K

OUTSIDE SCREW AND YOKE.
FLANGED END TO JIS 10K, DRILLED.
STEM: SS410 (SS304)
SIZE: 2"~12"

MODEL: CI-12G/CI-2GS



CAST IRON SWING CHECK VALVE

FLANGED END TO JIS 10K, DRILLED.
DISC: BRONZE / SUS304
SIZE: 2"~12"

MODEL: CI-12E / CI-2ES



CAST IRON KNIFE GATE VALVE

BODY: CAST IRON
KNIFE: SUS304
SIZE: 2"~32"

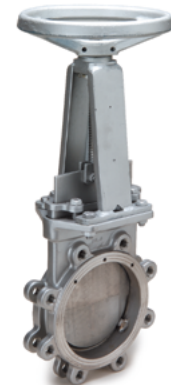
MODEL: CI-12K



ST.ST.304 KNIFE GATE VALVE

BODY: SUS304
KNIFE: SUS304
SIZE: 2"~28"

MODEL: SS304-12K



FORGED BRASS AIR RELEASE VALVE

(AUTOMATIC AIR VENT VALVE)
SCREWED END
SIZE: 1/2"~1"

MODEL: AV-BC1



CAST IRON AIR RELEASE VALVE

(AUTOMATIC AIR VENT VALVE)
STAINLESS STEEL TRIM & FLOAT
SCREWED END
SIZE: 1/2"~1"
OPTION: EPOXY COATING IN & OUT

MODEL: AV-10K / AV-16K / AV-PN16



ST.ST.304 AIR RELEASE VALVE

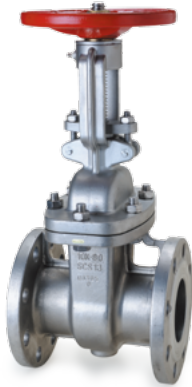
(AUTOMATIC AIR VENT VALVE)
STAINLESS STEEL TRIM & FLOAT
SCREWED END
SIZE: 1/2"~1"

MODEL: AV-304



ST.ST.304 / 316
GATE VALVE JIS 10K
 OUTSIDE SCREWED AND YOKE.
 FLANGED END TO JIS 10K DRILLED
 SIZE: 1/2"~16"

MODEL: SS304-14Y / SS316-16Y



ST.ST.304 / 316
GATE VALVE ANSI 150
 OUTSIDE SCREWED AND YOKE.
 FLANGED END TO ANSI 150 DRILLED
 SIZE: 1/2"~16"

MODEL: SS304-54Y / SS316-56Y



ST.ST.304 / 316
GATE VALVE JIS 20K
 OUTSIDE SCREWED AND YOKE.
 FLANGED END TO JIS 20K DRILLED
 SIZE: 1/2"~12"

MODEL: SS304-24Y / SS316-26Y



ST.ST.304 / 316
GATE VALVE ANSI 300
 OUTSIDE SCREWED AND YOKE.
 FLANGED END TO ANSI 300 DRILLED
 SIZE: 1/2"~12"

MODEL: SS304-34Y / SS316-36Y



ST.ST.304 / 316
GLOBE VALVE JIS 10K
 OUTSIDE SCREWED AND YOKE.
 FLANGED END TO JIS 10K DRILLED
 SIZE: 1/2"~12"

MODEL: SS304-14G / SS316-16G



ST.ST.304 / 316
GLOBE VALVE ANSI 150
 OUTSIDE SCREWED AND YOKE.
 FLANGED END TO ANSI 150 DRILLED
 SIZE: 1/2"~12"

MODEL: SS304-54G / SS316-56G



ST.ST.304 / 316
GLOBE VALVE JIS 20K
 OUTSIDE SCREWED AND YOKE.
 FLANGED END TO JIS 20K DRILLED
 SIZE: 1/2"~10"

MODEL: SS304-24G / SS316-26G



ST.ST.304 / 316
GLOBE VALVE ANSI 300
 OUTSIDE SCREWED AND YOKE.
 FLANGED END TO ANSI 300 DRILLED
 SIZE: 1/2"~10"

MODEL: SS304-34G / SS316-36G



ST.ST.304 / 316
SWING CHECK VALVE JIS 10K
 FLANGED END TO JIS 10K DRILLED
 FOR HORIZONTAL OR VERTICAL LINES
 SIZE: 1/2"~14"

MODEL: SS304-14E / SS316-16E



**ST.ST.304/316
SWING CHECK VALVE ANSI 150**
FLANGED END TO ANSI 150 DRILLED
FOR HORIZONTAL OR VERTICAL LINES
SIZE: 1/2"~14"

MODEL: SS304-54E / SS316-56E



**ST.ST.304/316
SWING CHECK VALVE JIS 20K**
FLANGED END TO JIS 20K DRILLED
FOR HORIZONTAL OR VERTICAL LINES
SIZE: 1/2"~12"

MODEL: SS304-24E / SS316-26E



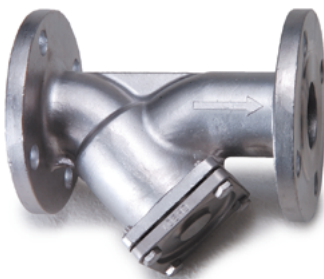
**ST.ST.304/316
SWING CHECK VALVE ANSI 300**
FLANGED END TO ANSI 300 DRILLED
FOR HORIZONTAL OR VERTICAL LINES
SIZE: 1/2"~12"

MODEL: SS304-34E / SS316-36E



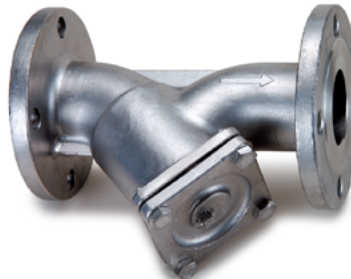
ST.ST.304/316/WCB Y-STRAINER
FLANGED END TO JIS 10K DRILLED
SIZE: 1/2"~14"

MODEL: YS-14F / YS-16F / YS-1CSF



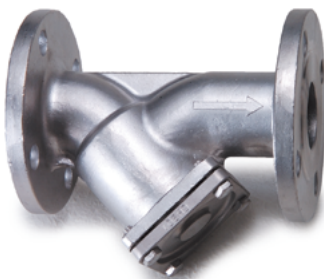
ST.ST.304/316/WCB Y-STRAINER
FLANGED END TO ANSI 150 DRILLED
SIZE: 1/2"~14"

MODEL: YS-54F / YS-56F / YS-5CSF



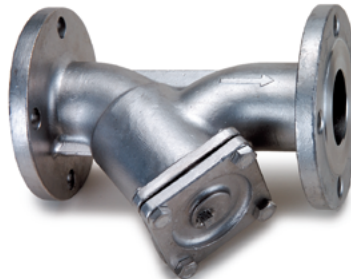
CAST STEEL GATE VALVE 10K/150
FLANGED END TO JIS 10K OR ANSI 150.
DRILLED. O.S.&Y.
SIZE: 2"~16"

MODEL: CS-10Y / CS-15Y



CAST STEEL GLOBE VALVE 10K/150
FLANGED END TO JIS 10K OR ANSI 150.
DRILLED. O.S.&Y.
SIZE: 1/2"~12"

MODEL: CS-10G / CS-15G



CAST STEEL SWING CHECK 10K/150
FLANGED END TO JIS 10K OR ANSI 150.
DRILLED. O.S.&Y.
SIZE: 1.1/2"~12"

MODEL: CS-10E / CS-15E

CAST STEEL GATE VALVE 20K/300
FLANGED END TO JIS 20K OR ANSI 300.
DRILLED. O.S.&Y.
SIZE: 1.1/2"~12"

MODEL: CS-20Y / CS-30Y

CAST STEEL GLOBE VALVE 20K/300
FLANGED END TO JIS 20K OR ANSI 300.
DRILLED. O.S.&Y.
SIZE: 1.1/2"~12"

MODEL: CS-20G / CS-30G

CAST STEEL SWING CHECK 20K/300
FLANGED END TO JIS 20K OR ANSI 300.
DRILLED. O.S.&Y.
SIZE: 1.1/2"~12"

MODEL: CS-20E / CS-30E

**ST.ST.316 GATE VALVE
CLASS 600**

SCREWED END TO BS21,
ANSI B2.1, DIN-259.
BODY: CF8M
SIZE: 1/2"~3"

MODEL: SS-207



**ST.ST.316 GLOBE VALVE
CLASS 600**

SCREWED END TO BS21,
ANSI B2.1, DIN-259.
BODY: CF8M
SIZE: 1/2"~2"

MODEL: SS-208



**ST.ST.316 SWING CHECK VALVE
CLASS 600**

SCREWED END TO BS21,
ANSI B2.1, DIN-259.
BODY: CF8M
SIZE: 1/2"~3"

MODEL: SS-209



**ST.ST.316 Y-GLOBE VALVE
CLASS 600**

SCREWED END TO BS21,
ANSI B2.1, DIN-259.
BODY: CF8M
SIZE: 1/4"~2"

MODEL: YG-316



**ST.ST.316 Y-SPRING CHECK VALVE
CLASS 600**

SCREWED END TO BS21,
ANSI B2.1, DIN-259.
BODY: CF8M
SIZE: 1/4"~3"

MODEL: YC-316



**ST.ST.316 Y-STRAINER
CLASS 600**

SCREWED END TO BS21,
ANSI B2.1, DIN-259.
BODY: CF8M
SIZE: 1/4"~3"

MODEL: YS-R6S

