



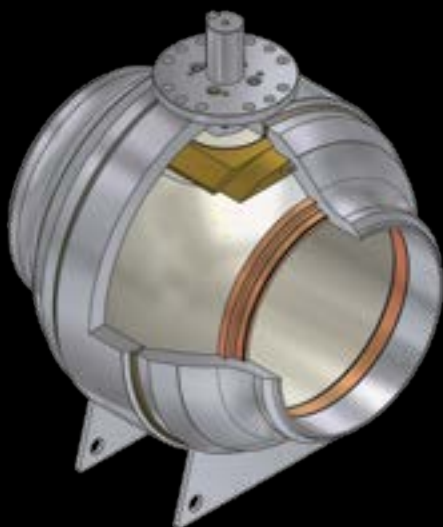
Perar Product Range

Trunnion Mounted Welded Body Ball Valves

The design of PERAR Welded Body Ball Valves minimizes the potential leak paths making these valves suitable for buried installations and in general for gas transportation.

General characteristics

- Design per API 6D or API 6A
- Full Bore and Reduced Bore design
- Flanged or Welding Ends
- Bi-directional sealing
- Fire-safe design



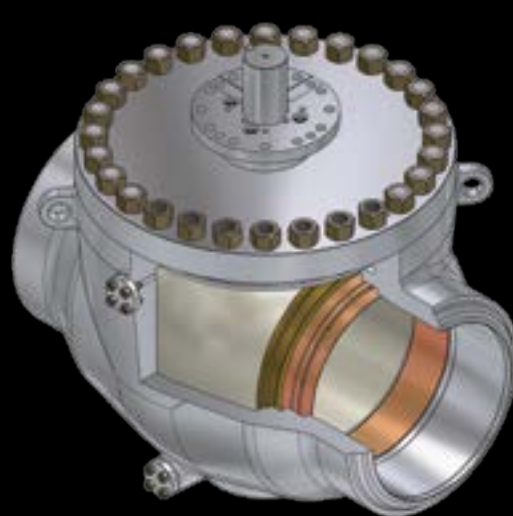
Model: WB
Size: 1/2" to 68"
Pressure Classes: ASME 150# to 2500#
Temperature Range: -196°C to 400°C

Trunnion Mounted Top-Entry Ball Valves

PERAR Trunnion Mounted Top-Entry Ball Valves add a full in-line maintenance capability to the advantages of a trunnion mounted construction.

General characteristics

- Design per API 6D or API 6A
- Full Bore and Reduced Bore design
- Flanged, Welding or Hub Ends
- Bi-directional sealing
- Fire-safe design



Model: TE
Size: 1/2" to 68"
Pressure Classes: ASME 150# to 2500#
API 6A 3000 to 15000
Temperature Range: -196°C to 400°C

