

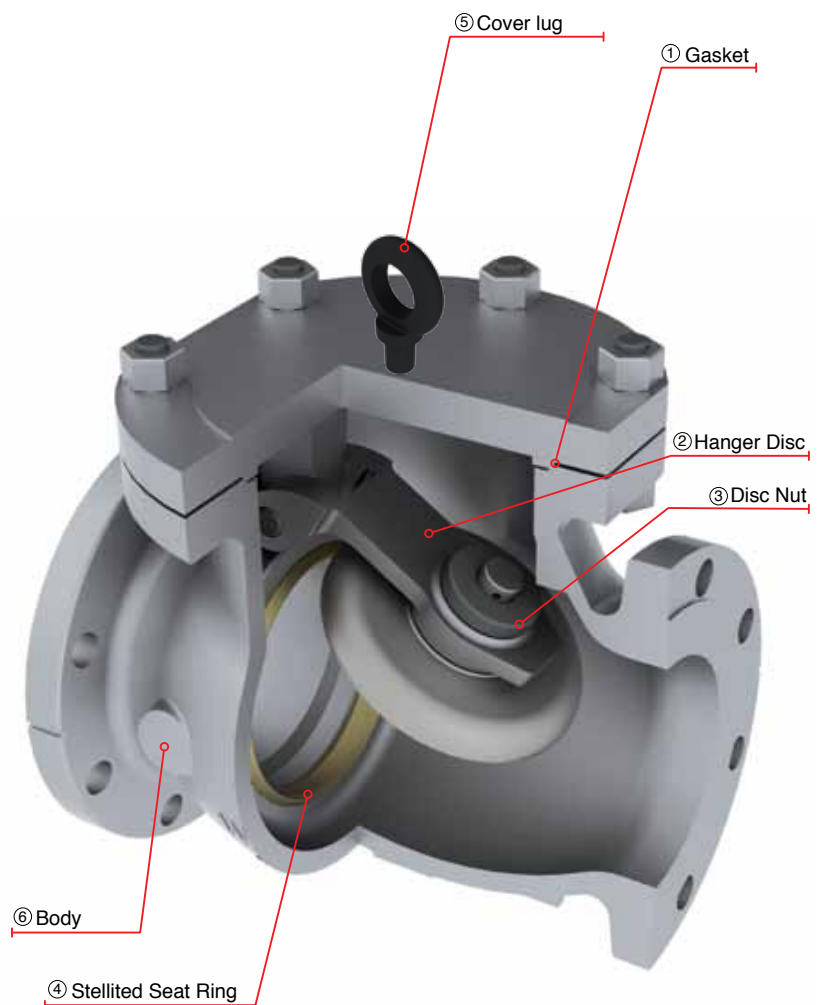
# CAST STEEL SWING CHECK VALVES CLASS 150

## CAST STEEL SWING CHECK VALVES

### DESIGN FEATURES

- Swing check valves design in accordance with API-6D.
- Swing check valves as per API-599 available upon request.
- Swing check valves option in accordance with API-603 only for stainless steel & Nickel alloys.
- Swing check valves for cryogenic service in accordance with BS-6364.
- Flange dimensions in accordance with ASME B16.5 for valves up to 24" nominal diameter.
- Damper & Counter weight options.
- Drain connections as per Customer request.
- Low fugitive emissions control.
- NACE service either MR-01-75 or MR-01-03.
- Test in accordance with API-598.

- ① Body to Cover Joint designed to apply a uniform load to the gasket to assure a leak proof seal.
- ② Disc to Hanger connection allows the disc a controlled movement independent of the hanger to assure proper disc alignment with the seat at closure.
- ③ The connection is secured by a welded disc nut to prevent disassembly due to vibration and closure impact.
- ④ Stellite Seat Ring provides increased resistance to wear abrasion and erosion of the sealing surface.
- ⑤ For 8" and up, WALWORTH check valves have cover lug for easy installation
- ⑥ Body with heavy wall thickness as per ASME B16.34 for maximum service life. Provided with bosses for optional drains.



# CAST STEEL SWING CHECK VALVES, CLASS 150

## Design Features

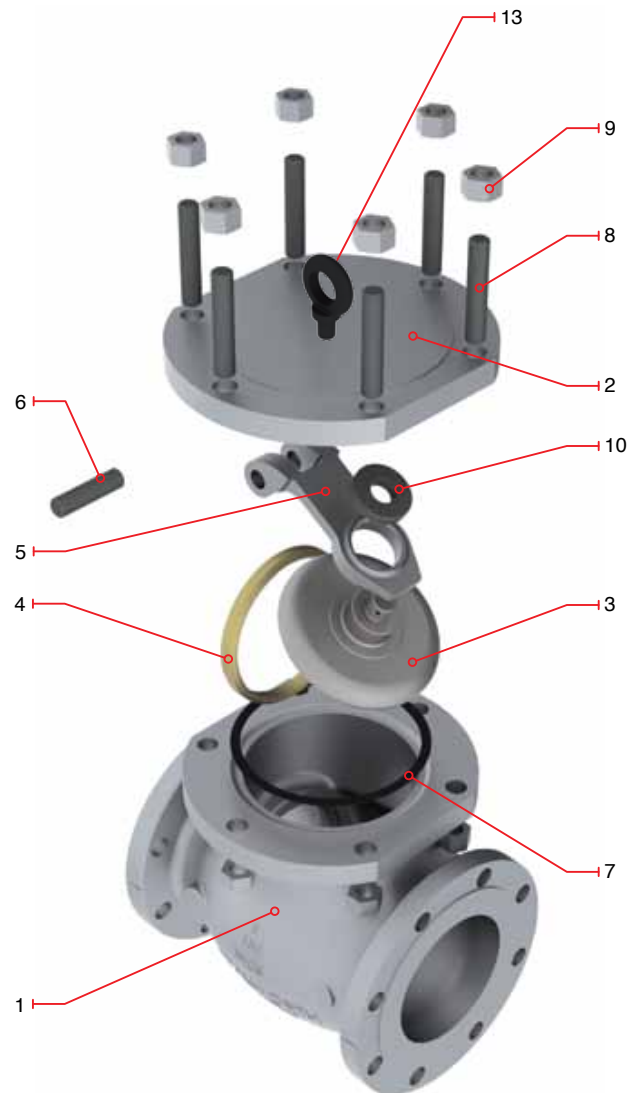
- Design in accordance with API-6D.
- Swing check valves as per API-599 available upon request.
- Flange dimensions as per ASME B16.5
- End to end dimensions as per ASME B16.10
- WE dimensions as per ASME B 16.25
- Flange dimensions larger than 24" according to ASME B16.47 Series A as standard
- Flange dimensions as per ASME B16.47 Series B available upon request

Catalog Figure No.	ID Plant Figure No.	Type of Ends
5341RF	5341F	Flanged Raised Face
5341RTJ	5341RJ	Flanged Ring Type Joint
5341WE	5341WE	Buttweld

## Regular Bill of Materials

No.	Description	STANDARD MATERIAL
1	Body	ASTM A 216 GR WCB
2	Cover	ASTM A 216 GR WCB
3	Disc	A 216 GR WCB + 13% Cr.
4	Seat Ring	ASTM A 515 GR 70 + ST 6
5	Hanger	ASTM A 216 GR WCB
6	Hanger Pin	ASTM A 276 Type 410
7	Cover Gasket	Spiral Stainless 304/Graphite
8	Cover Stud	ASTM A 193 GR B7
9	Cover Stud Nut	ASTM A 194 GR 2H
10	Disc Nut	Alloy Steel
*11	Body Plug	Alloy Steel
*12	Identification Plate	Stainless Steel
**13	Coverlug	Commercial Steel

\*Not shown \*\*Only from 8" and up



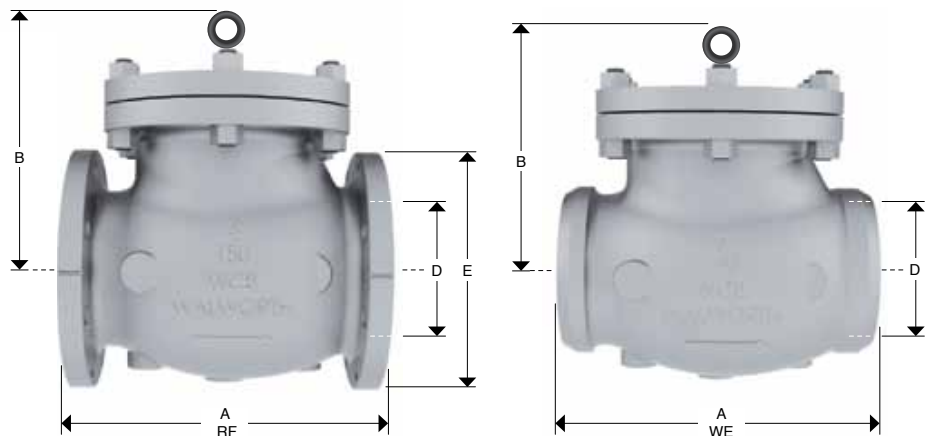
# CAST STEEL SWING CHECK VALVES, CLASS 150



## Design Features

- Design in accordance with API-6D.
- Swing check valves as per API-599 available upon request.
- End to end dimensions as per ASME B16.10
- WE dimensions as per ASME B 16.25
- Flange dimensions larger than 24" according to ASME B16.47 Series A as standard
- Flange dimensions as per ASME B16.47 Series B available upon request

Catalog Figure No.	ID Plant Figure No.	Type of Ends
5341RF	5341F	Flanged Raised Face
5341RTJ	5341RJ	Flanged Ring Type Joint
5341WE	5341WE	Buttweld



## Dimensions and Weights

D Nominal Diameter	mm	51	64	76	102	152	203	254	305	356	406	457	508	610	762	914	1067	1219
	in	2	2 1/2	3	4	6	8	10	12	14	16	18	20	24	30	36	42	48
A (RF and WE)	mm	203	216	241	292	356	495	622	699	787	864	978	978	1295	1524	1956	PCR	PCR
	in	8	8 1/2	9 1/2	11 1/2	14	19 1/2	24 1/2	27 1/2	31	34	38 1/2	38 1/2	51	60	77	PCR	PCR
B	mm	134	156	162	205	238	291	349	381	457	502	573	606	702	1003	1118	PCR	PCR
	in	5 9/32	6 1/8	6 3/8	8 1/16	9 3/8	11 7/16	13 3/4	15	18	19 3/4	22 9/16	23 7/8	27 5/8	39.5	44	PCR	PCR
E	mm	152	178	191	229	279	343	406	483	533	597	635	699	813	984	1168	1346	1511
	in	6	7	7 1/2	9	11	13 1/2	16	19	21	23 1/2	25	27 1/2	32	38.75	46	53	59.5
Weight 5341RF	Kg	15	21	27	40	69	172	266	399	388	510	600	918	1160	1816	3632	PCR	PCR
	lb	33	46.2	59.4	88	151.8	378.4	585.2	877.8	853.6	1122	1320	2019.6	2552	4000	8000	PCR	PCR
Weight 5341WE	Kg	13	19	17	36	64	132	210	305	318	418	492	753	951	1489	2978	PCR	PCR
	lb	28.6	41.8	37.4	79.2	140.8	290.4	462	671	700	920	1082	1656	2093	3276	6552	PCR	PCR

PCR = Per customer request