

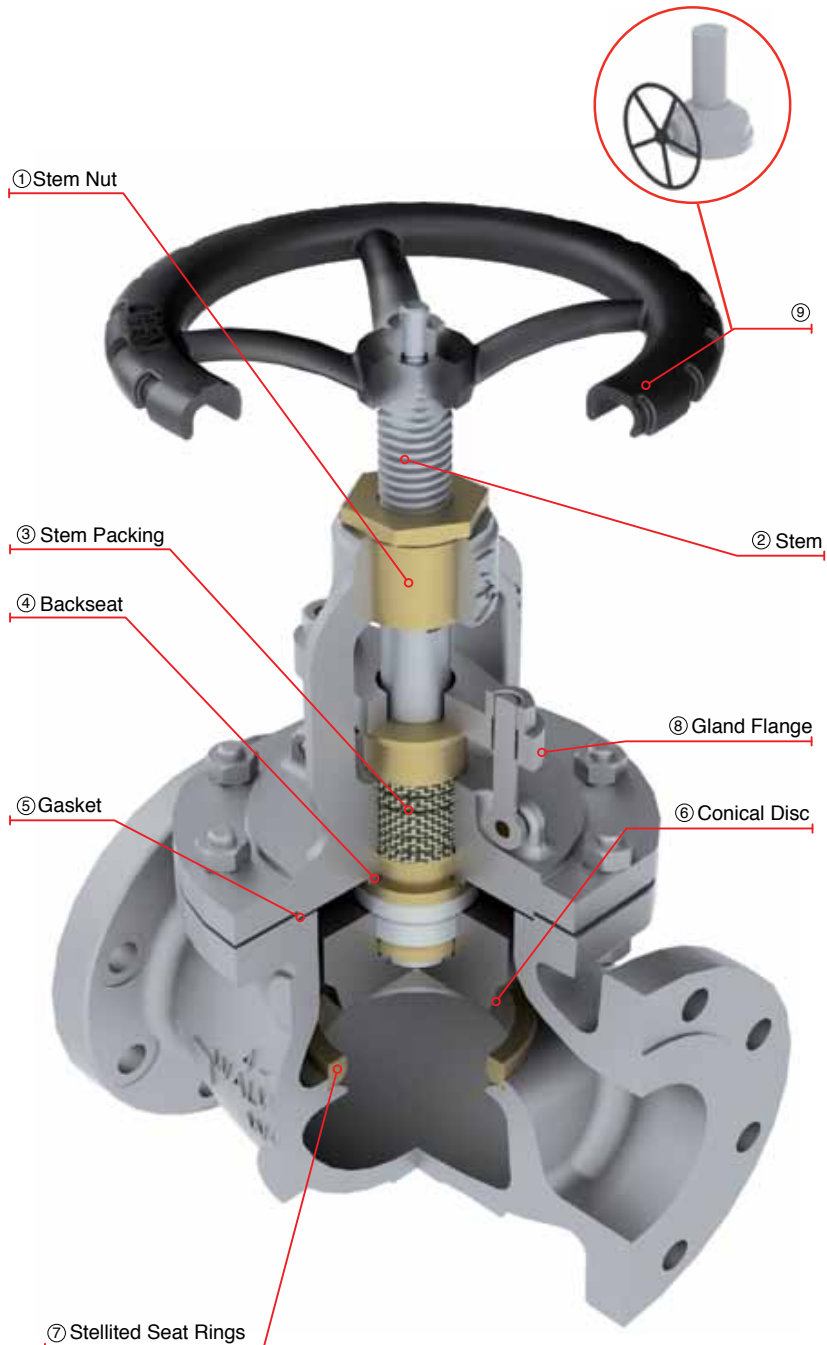
CAST STEEL GLOBE VALVES CLASS 150

CAST STEEL GLOBE VALVES WITH RISING HANDWHEEL AND STEM.

DESIGN FEATURES

- Globe valves design in accordance with API-623
- Globe valves option in accordance with API-603 only for stainless steel & nickel alloys.
- Globe valves for cryogenic service with gas column in accordance with BS-6364 upon request
- Flange dimensions in accordance with ASME B16.5 for valves up to 24" nominal diameter
- Handwheel, handwheel impact, chain wheel, gear operation, electric, pneumatic or hydraulic actuation as per customer requirements
- By-pass, lantern rings, grease injectors, special connections, etc.
- Low fugitive emissions control
- NACE service either MR-01-75 or MR-01-03.
- Test in accordance with API-598
- Stop check design option available

- ① Stem Nut, replaceable in line to avoid shut down of pipe line process.
- ② Revolving rising stem with precision ACME single or double thread for quick operation. Surface finish suitable to seal properly to get low fugitive emissions.
- ③ Stem Packing is designed for optimum control of fugitive emissions leakage to the atmosphere. The ultra low emission leakage rate is assured by the fine finish in the stem, the reduced diametrical clearances and the stem straightness control special designed packing. Live load packing arrangement available upon request.
- ④ Backseat either threaded or welded, designed to relieve back pressure on the stem packing when fully seated. Replacing stem packing under pressure is not recommended. Hard faced backseat available for severe service as customer requirements
- ⑤ Body to Bonnet Joint designed to apply a uniform load to the gasket to assure a leak proof seal.
- ⑥ Conical Plug Type Disc, integrally guided to assure true alignment between disc and valve body. The loose disc design allows the disc and seat ring sealing surface to seat correctly without damage.
- ⑦ Stellite Seat Rings is seal welded to provide a increased resistance to wear, abrasion, and erosion of the sealing surfaces.
- ⑧ Two pieces arrangement gland flange and stem packing bushing for self-alignment to avoid stem damage.
- ⑨ Impact Handwheel, the mechanism is based on transmitting the momentum generated by the mass of the handwheel through the impact/impulse generated during the snap closure action of the handwheel. This type of handwheel is used when a standard handwheel cannot create enough closing force to effect a seal. Gear operated is also available.



CAST STEEL GLOBE VALVES, CLASS 150 (HANDWHEEL OPERATED)

Design Features

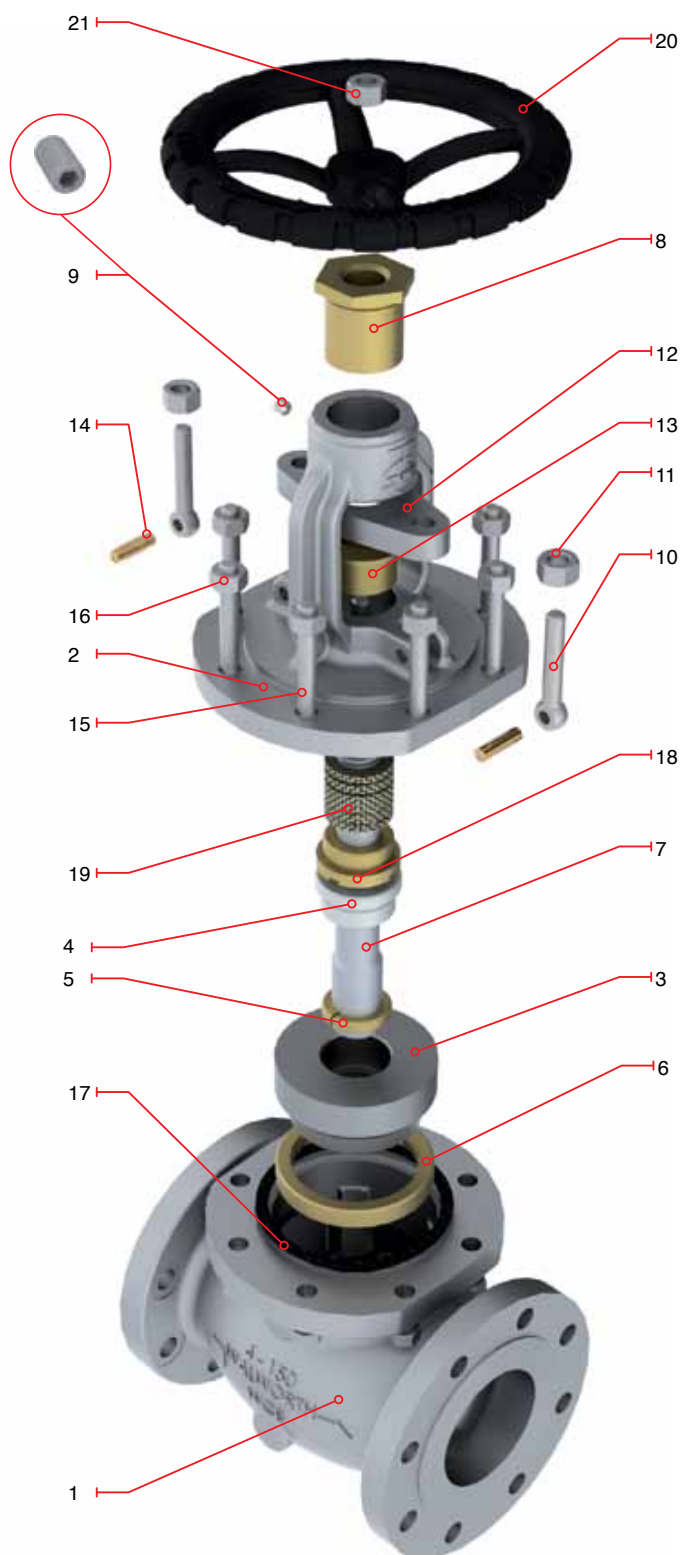
- Design in accordance with API-623
- Rising Stem and Handwheel
- Flange dimensions as per ASME B16.5
- End to end dimensions as per ASME B16.10
- WE dimensions as per ASME B 16.25
- Bonnet with Bearings: 14" and larger
- Size 2" to 12" Handwheel Operated as standard

Catalog Figure No.	ID Plant Figure No.	Type of Ends
5275RF	5275F	Flanged Raised Face
5275RTJ	5275RJ	Flanged Ring Type Joint
5275WE	5275WE	Buttweld

Regular Bill of Materials

No.	Description	STANDARD MATERIAL
1	Body	ASTM A 216 GR WCB
2	Bonnet	ASTM A 216 GR WCB
3	Disc	ASTM A 276 Type 410
4	Disc Locknut	Alloy Steel
5	Disc Washer	ASTM A 276 Type 410
6	Seat Ring	ASTM A 515 GR 70 + ST6
7	Stem	ASTM A 276 Type 410
8	Stem Nut	ASTM B 148 UNS C95600
9	Set Screw	Alloy Steel
10	Eyebolt	Alloy Steel
11	Eyebolt Nut	ASTM A 307
12	Gland Flange	ASTM A 515 GR 70
13	Packing Bushing	ASTM A 108 GR 1020
14	Eyebolt Pin	Alloy Steel
15	Bonnet Stud	ASTM A 193 GR B7
16	Bonnet Stud Nut	ASTM A 194 GR 2H
17	Bonnet Gasket	Spiral Stainless 304/Graphite
18	Bonnet Bushing	ASTM A 276 Type 410
19	Stem Packing	Graphite
20	Handwheel	ASTM A 197
21	Handwheel Nut	ASTM A 307
*22	Handwheel Washer	Commercial Steel
*23	Identification Plate	Stainless Steel

*Not shown



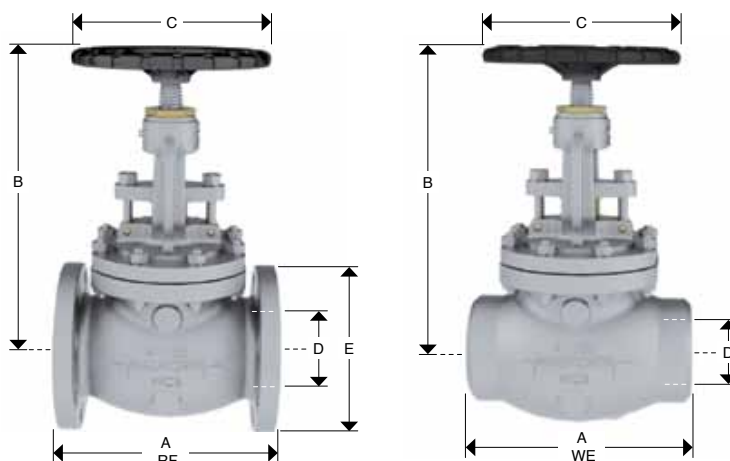
CAST STEEL GLOBE VALVES, CLASS 150 (HANDWHEEL OPERATED)



Design Features

- Design in accordance with API-623
- Rising Stem and Handwheel 6" and smaller
- Rising stem and fixed handwheel 8" and up
- Flange dimensions as per ASME B16.5
- End to end dimensions as per ASME B16.10
- WE dimensions as per ASME B 16.25
- Bonnet with Bearings: 14" and larger
- Size 2" to 12" Handwheel Operated as standard

Catalog Figure No.	ID Plant Figure No.	Type of Ends
5275RF	5275F	Flanged Raised Face
5275RTJ	5275RJ	Flanged Ring Type Joint
5275WE	5275WE	Buttweld



Dimensions and Weights

D Nominal Diameter	mm	51	64	76	102	152	203	254	305
	in	2	2 1/2	3	4	6	8	10	12
A (RF and WE)	mm	203	216	241	292	406	495	622	699
	in	8	8 1/2	9 1/2	11 1/2	16	19 1/2	24 1/2	27 1/2
B	mm	329	386	354	432	513	643	668	830
	in	12 15/16	15 3/16	13.94	17	20 3/16	25 5/16	26 5/16	32 11/16
C	mm	203	203	203	254	356	406	457	610
	in	8	8	8	10	14	16	18	24
E	mm	152	178	191	229	279	343	406	483
	in	6	7	7 1/2	9	11	13 1/2	16	19
Weight 5275RF	Kg	18	29	34	55	100	186	267	399
	lb	40	64	75	121	220	409	587	878
Weight 5275WE	Kg	15	25	25	45	84	155	233	341
	lb	33	55	55	99	185	341	513	752

For size and dimensions not shown, please contact our Sales Department.

CAST STEEL GLOBE VALVES, CLASS 150 (GEAR OPERATED)

Design Features

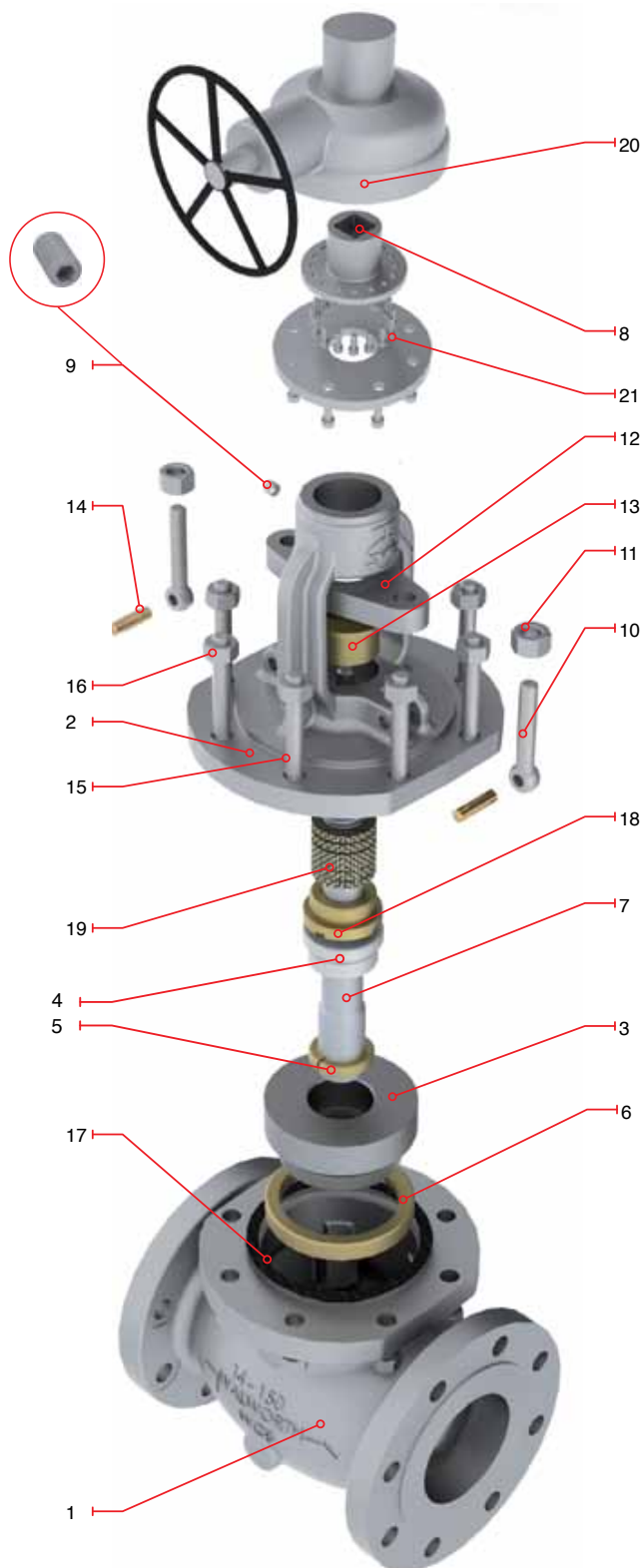
- Design in accordance with with API-623
- Rising Stem and Handwheel 6" and smaller
- Flange dimensions as per ASME B16.5
- End to end dimensions as per ASME B16.10
- WE dimensions as per ASME B 16.25
- Bonnet with Bearings: 14" and larger
- Size 2" to 12" Handwheel Operated as standard

Catalog Figure No.	ID Plant Figure No.	Type of Ends
5275RF	5275F	Flanged Raised Face
5275RTJ	5275RJ	Flanged Ring Type Joint
5275WE	5275WE	Buttweld

Regular Bill of Materials

No.	Description	STANDARD MATERIAL
1	Body	ASTM A 216 GR WCB
2	Bonnet	ASTM A 216 GR WCB
3	Disc	ASTM A 276 Type 410
4	Disc Locknut	Alloy Steel
5	Disc Washer	ASTM A 276 Type 410
6	Seat Ring	ASTM A 515 GR 70 + ST6
7	Stem	ASTM A 276 Type 410
8	Stem Nut	ASTM B 148 UNS C95600
9	Set Screw	Alloy Steel
10	Eyebolt	Alloy Steel
11	Eyebolt Nut	ASTM A 307
12	Gland Flange	ASTM A 515 GR 70
13	Packing Bushing	ASTM A 108 GR 1020
14	Eyebolt Pin	Alloy Steel
15	Bonnet Stud	ASTM A 193 GR B7
16	Bonnet Stud Nut	ASTM A 194 GR 2H
17	Bonnet Gasket	Spiral Stainless 304/Graphite
18	Bonnet Bushing	ASTM A 276 Type 410
19	Stem Packing	Graphite
20	Gear Operator	as customer requirements
*21	Operator Bolts	Alloy Steel
*22	Identification Plate	Stainless Steel

*Not shown

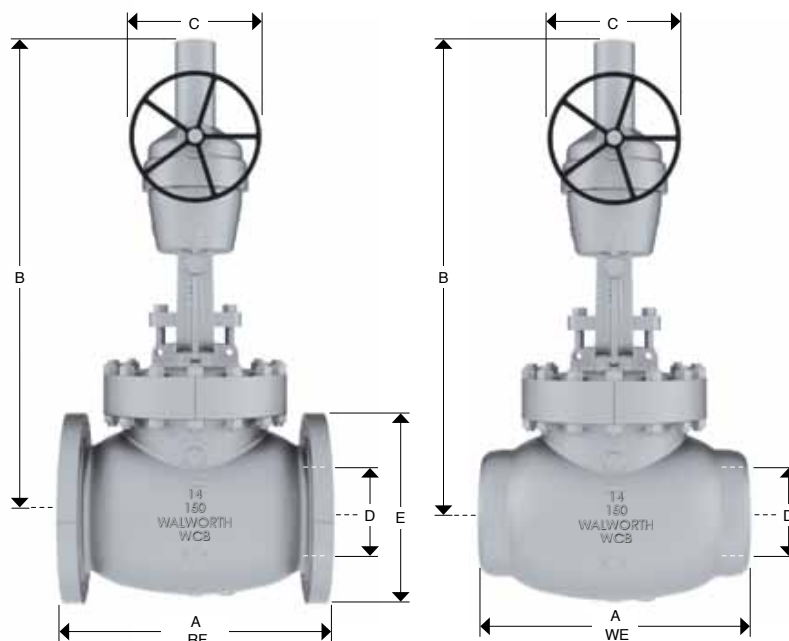


CAST STEEL GLOBE VALVES, CLASS 150 (GEAR OPERATED)

Design Features

- Design in accordance with API-623
- Rising Stem and Handwheel 6" and smaller
- Flange dimensions as per ASME B16.5
- End to end dimensions as per ASME B16.10
- WE dimensions as per ASME B 16.25
- Bonnet with Bearings: 14" and larger
- Size 14" and up gear operated as standard

Catalog Figure No.	ID Plant Figure No.	Type of Ends
5275RF	5275F	Flanged Raised Face
5275RTJ	5275RJ	Flanged Ring Type Joint
5275WE	5275WE	Buttweld



Dimensions and Weights

D Nominal Diameter	mm	356	406	457	508	610
	in	14	16	18	20	24
A (RF and WE)	mm	787	914	978	978	1295
	in	31	36	38.5	38 1/2	51
B	mm	990	996	1327	1230	1500
	in	39	39 1/4	52 1/4	48 3/8	59
C	mm	560	640	720	530	600
	in	22	25	28	21	23 1/2
E	mm	533	597	635	699	813
	in	21	23 1/2	25	27 1/2	32
Weight 5275RF	mm	530	678	998	1097	1613
	in	1166	1492	2196	2413.4	3548.6
Weight 5275WE	Kg	472	603	888	976	1436
	lb	1038	1328	1954	2148	3158

For size and dimensions not shown, please contact our Sales Department.