

SERIES: B501FM - B501FC - 150# (1" - 4")

1-PC FLANGED END BALL VALVE

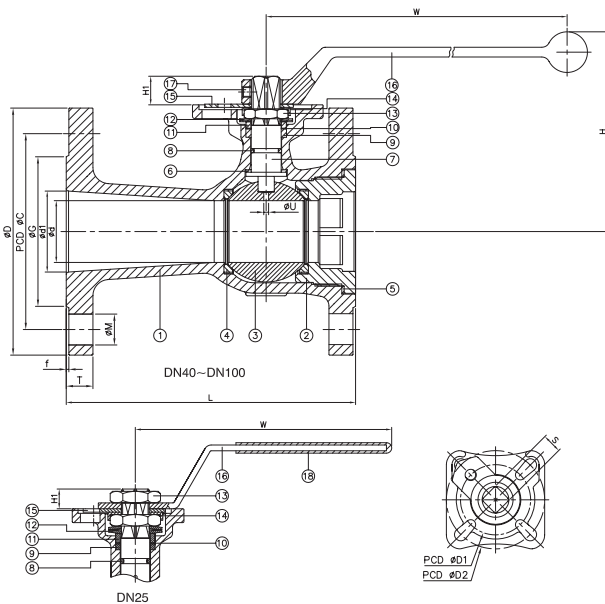
Stainless / Carbon Steel

DIRECT MOUNT • FIRE SAFE



DESIGN FEATURES:

- Standard port, 1"~4" (DN25~DN100)
- **W.P. : CLASS 150**
- W.T. : -20°C~200°C (-4°F~392°F)
- Investment casting
- Blow-out proof stem
- Live-loading design
- Silicone Free
- Anti-static device
- **Direct mounting pad ISO 5211**
- **API 607 Fire safe approved**
- Wall thickness: ASME B16.34
- Flange dimension: ASME B16.5
- Face to face: ASME B16.10
- Supplied with lever handle



ITEM	PARTS	MATERIAL	
		B501FMMGXXX	B501FCMGXXX
1	BODY	ASTM A351-CF8M	ASTM A216-WCB
2	RETAINER		
3	BALL	ASTM A351-CF8M	
4	SEAT	TFM 1600	
5	SEAL	GRAPHITE	
6	THRUST WASHER	CTFE	
7	STEM	ASTM A276-316	
8	O-RING	VITON	
9	PACKING A	GRAPHITE	
10	PACKING B	CTFE	
11	GLAND RING	AISI 304	
12	BELLEVILLE WASHER	AISI 301	
13	STEM NUT	AISI 304	
14	LOCKING WASHER		
15	STOPPER		
16	HANDLE	STAINLESS STEEL	
17	SOCKET SET SCREWS	AISI 304	
18	HANDLE SLEEVE	PVC	

DN	d	d1	G	C	D	L	H	H1	W	T	f	S	D1	D2	M	U	ISO 5211	Torque (N-m)		Weight (kg)
																		Break-away	Action	
25	20	25	51	79.5	108.0	127.0	96	8.0	140.0	11.1	1.6	9	36	42	16	3	F03 / F04	9.8	5.9	2.0
40	30	40	73	98.5	127.0	165.0	101	10.5	197.5	14.3	1.6	11	42	50	16	3	F03 / F04	20.8	11.7	4.0
50	38	50	92	120.5	152.0	178.0	123	14.0	247.5	15.8	1.6	14	50	70	19	3	F05 / F07	29.9	20.8	6.8
65	50	64	105	139.5	178.0	190.5	136	15.5	247.5	17.6	1.6	14	50	70	19	3	F05 / F07	37.7	26.0	9.7
80	64	76	127	152.5	190.5	203.0	155	18.5	340.0	19.1	1.6	17	70	102	19	3	F07 / F10	48.1	36.4	15.2
100	76	100	157	190.5	229.0	229.0	170	20.0	340.0	24.0	1.6	17	70	102	19	3	F07 / F10	55.9	45.5	23.0

unit: mm

NPS	d	d1	G	C	D	L	H	H1	W	T	f	S	D1	D2	M	U	ISO 5211	Torque (in-lb)		Weight (lb)
																		Break-away	Action	
1"	0.79	0.98	2.01	3.13	4.25	5.00	3.79	0.31	5.51	0.44	0.06	0.35	1.42	1.65	0.63	0.12	F03 / F04	86.7	52.2	4.4
1-1/2"	1.18	1.57	2.87	3.88	5.00	6.50	3.97	0.41	7.78	0.56	0.06	0.43	1.65	1.97	0.63	0.12	F03 / F04	184.1	103.6	8.8
2"	1.50	1.97	3.62	4.74	5.98	7.01	4.84	0.55	9.74	0.62	0.06	0.55	1.97	2.76	0.75	0.12	F05 / F07	264.6	184.1	15.0
2-1/2"	1.97	2.52	4.13	5.49	7.01	7.50	5.35	0.61	9.74	0.69	0.06	0.55	1.97	2.76	0.75	0.12	F05 / F07	333.7	230.1	21.4
3"	2.52	2.99	5.00	6.00	7.50	7.99	6.11	0.73	13.39	0.75	0.06	0.67	2.76	4.02	0.75	0.12	F07 / F10	425.7	322.2	33.5
4"	2.99	3.94	6.18	7.50	9.02	9.02	6.70	0.79	13.39	0.94	0.06	0.67	2.76	4.02	0.75	0.12	F07 / F10	494.8	402.7	50.7

unit: in

FOR ADDITIONAL SIZES SEE NEXT PAGE