



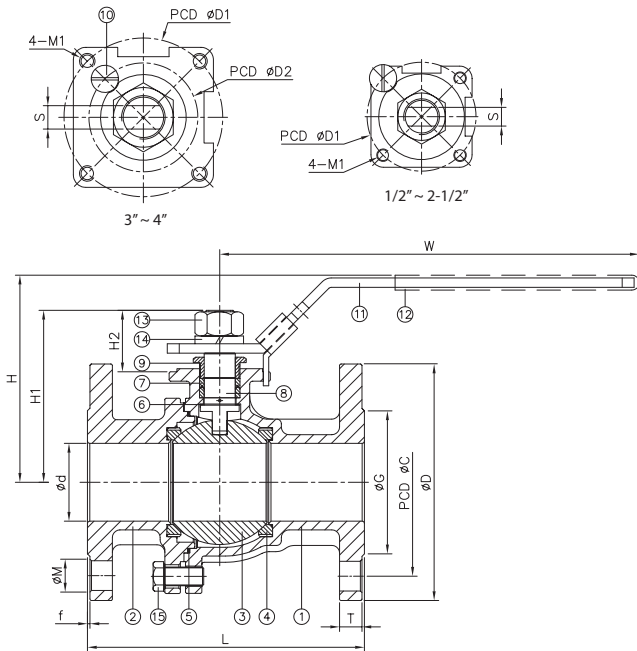
SERIES: B201FM - B201FC - 150#

2-PC FLANGED END BALL VALVE

Stainless / Carbon Steel (1/2" - 4")

DESIGN FEATURES:

- Full port, 1/2"~4" (DN15~DN100)
- **W.P. : CLASS 150**
- W.T. : -20°C~200°C (-4°F~392°F)
- Investment casting
- Blow-out proof stem
- Silicone Free
- Anti-static device
- Locking device
- **Mounting pad ISO 5211**
- Flange dimension: ASME B16.5
- Face to face: ASME B16.10



ITEM	PARTS	MATERIAL	
		B201FMMTXXX	B201FCMTXXX
1	BODY	ASTM A351-CF8M	ASTM A216-WCB
2	CAP		
3	BALL	ASTM A351-CF8M	
4	SEAT	TFM 1600	
5	SEAL	PTFE	
6	THRUST WASHER		
7	PACKING		
8	STEM	ASTM A276-316	
9	GLAND NUT	AISI 304	
10	STOP PIN		
11	HANDLE	STAINLESS STEEL	
12	HANDLE SLEEVE	PVC	
13	STEM NUT	AISI 304	
14	SPRING WASHER		
15	BOLT		

DN	d	G	C	D	L	H	H1	H2	W	T	f	S	D1	D2	M	M1	Torque (N-M)		Weight (kg)
																	Breakaway	Action	
15	15	35.0	60.5	89	108.0	85.7	57.2	23.7	169	9.6	1.6	8	42	-	16	M5	3.8	3.0	1.7
20	20	43.0	70.0	99	117.0	88.5	60.0	23.5	169	9.6	1.6	8	42	-	16	M5	5.5	4.0	2.1
25	25	51.0	79.0	108	127.0	103.3	73.8	29.0	205	9.7	1.6	10	50	-	16	M6	6.5	4.5	2.9
32	32	63.5	88.9	117	140.0	108.0	78.5	29.0	205	11.1	1.6	10	50	-	16	M6	9.0	7.5	4.0
40	38	73.2	98.6	127	165.0	128.4	102.9	39.4	266	12.7	1.6	12	70	-	16	M8	25.0	20.0	5.7
50	50	92.0	120.7	152	178.0	135.9	110.4	39.4	266	14.4	1.6	12	70	-	19.1	M8	38.0	30.0	8.4
65	65	104.6	139.0	178	190.0	147.6	122.1	38.6	298	16.0	1.6	12	70	-	19.1	M8	45.0	35.0	13.3
80	80	127.0	152.0	190	203.0	167.5	142.0	43.0	390	17.5	1.6	15	102	70	19.1	M10	61.0	50.0	16.4
100	100	157.2	190.5	228	228.5	182.5	157.0	43.0	390	22.4	1.6	15	102	70	19.1	M10	80.0	73.0	27.7

unit: mm

NPS	d	G	C	D	L	H	H1	H2	W	T	f	S	D1	D2	M	M1	Torque (lb-in)		Weight (lb)
																	Breakaway	Action	
1/2"	0.59	1.38	2.38	3.50	4.25	3.37	2.25	0.93	6.65	0.38	0.06	0.31	1.65	-	0.63	M5	33.6	26.6	3.8
3/4"	0.79	1.69	2.76	3.90	4.61	3.48	2.36	0.93	6.65	0.38	0.06	0.31	1.65	-	0.63	M5	48.7	35.4	4.5
1"	0.98	2.01	3.11	4.25	5.00	4.07	2.91	1.14	8.07	0.38	0.06	0.39	1.97	-	0.63	M6	57.5	39.8	6.4
1-1/4"	1.26	2.50	3.50	4.61	5.51	4.25	3.09	1.14	8.07	0.44	0.06	0.39	1.97	-	0.63	M6	79.7	66.4	8.8
1-1/2"	1.50	2.88	3.88	5.00	6.50	5.06	4.05	1.55	10.47	0.50	0.06	0.47	2.76	-	0.63	M8	221.3	177.0	12.5
2"	1.97	3.62	4.75	5.98	7.01	5.35	4.35	1.55	10.47	0.57	0.06	0.47	2.76	-	0.75	M8	336.3	265.5	18.5
2-1/2"	2.56	4.12	5.47	7.01	7.48	5.81	4.81	1.52	11.73	0.63	0.06	0.47	2.76	-	0.75	M8	398.3	309.8	29.3
3"	3.15	5.00	5.98	7.48	7.99	6.59	5.59	1.69	15.35	0.69	0.06	0.59	4.02	2.76	0.75	M10	539.9	442.5	36.1
4"	3.94	6.19	7.50	8.98	9.00	7.19	6.18	1.69	15.35	0.88	0.06	0.59	4.02	2.76	0.75	M10	708.1	646.1	61.0

unit: in