



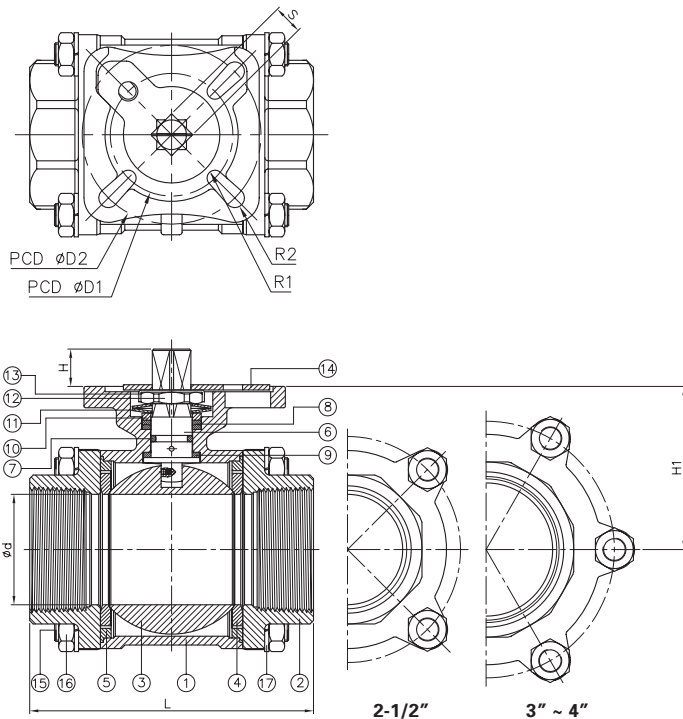
SERIES: B710TM - B710TC (2-1/2" - 4")

3-PC THREADED BALL VALVE

Stainless / Carbon Steel

DESIGN FEATURES:

- Full port, 2-1/2"~ 4" (DN65 ~ DN100)
- **W.P. : 1000 WOG (PN63)**
- W.T. : -20°C~200°C (-4°F~392°F)
- Investment casting
- Blow-out proof stem
- Live-loading design
- Locking device
- Silicone Free
- Supplied with lever handle
- Anti-static device
- **Direct mounting pad ISO 5211**
- Automation accessories (option)
- Thread type :
 - » ASME B1.20.1 (NPT)
 - » DIN2999 & BS21
 - » ISO7/1 & EN10226



ITEM	PARTS	MATERIAL	
		B710TMMTXXX	B710TCMTXXX
1	BODY	ASTM A351-CF8M	ASTM A216-WCB
2	CAP		
3	BALL		
4	SEAT	TFM 1600	
5	SEAL	PTFE	
6	STEM	ASTM A276-316	
7	O-RING	VITON	
8	PACKING	PTFE	
9	THRUST WASHER	PTFE	
10	GLAND RING	AISI 304	
11	BELLEVILLE WASHER	AISI 301	
12	STEM NUT	AISI 304	
13	LOCK WASHER		
14	LOCKING DEVICE		
15	HANDLE		
16	BOLT		
17	NUT		
18	SPRING WASHER		
19	BOLT		
20	NUT		

DN	d	d1	L	L1	H	H1	H2	W	S	D1	D2	R1	R2	ISO 5211	Torque (N-M)		Weight (kg)
															Breakaway	Action	
65	63	74.0	162	16	127.3	16.3	92	325	17	70	102	4.5	5.5	F07/F10	55	33	7.4
80	76	90.0	188	16	136.3	16.3	100	325	17	70	102	4.5	5.5	F07/F10	70	42	10.3
100	96	115.5	224	20	142.5	20.5	130	325	22	102	125	5.5	6.5	F10/F12	90	54	19.9

unit: mm

NPS	d	d1	L	L1	H	H1	H2	W	S	D1	D2	R1	R2	ISO 5211	Torque (in-lb)		Weight (lb)
															Breakaway	Action	
2-1/2"	2.48	2.91	6.38	0.63	5.01	0.64	3.62	12.8	0.67	2.76	4.02	0.18	0.22	F07/F10	486.8	292.1	16.3
3"	2.99	3.54	7.40	0.63	5.37	0.64	3.94	12.8	0.67	2.76	4.02	0.18	0.22	F07/F10	619.5	371.7	22.7
4"	3.78	4.55	8.82	0.79	5.61	0.81	5.12	12.8	0.87	4.02	4.92	0.22	0.26	F10/F12	796.6	477.9	43.9

unit: in