

 **CHECK VALVE zCHE**



Body material	Nominal pressure	Nominal diameter	Max. temperature
<b>D</b> Nodular cast iron	<b>C</b> 16 bar	DN <b>25-80</b>	70°C

**FEATURES**

- very slight pressure drop
- fill bore
- self cleaning
- silent
- horizontal and vertical installation

**APPLICATION**

industries



INDUSTRY

media



SEWAGE



INDUSTRIAL  
WATER

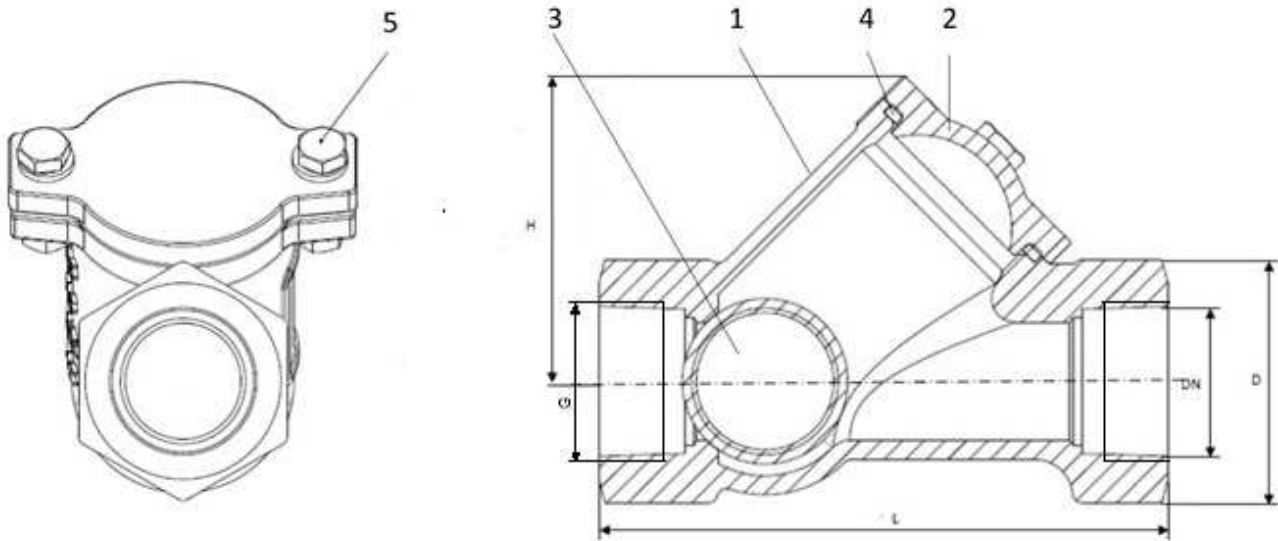


NEUTRAL  
FLUIDS

Data given can be changed without notice.

Edition 01/2018

**MATERIALS, DIMENSIONS**



	Body material	D
	Type	55
1	Body	EN- GJS- 500-7 5.3200 (ex.JS 1050)
2	Cover	EN- GJS- 500-7 5.3200 (ex.JS 1050)
3	Ball	Steel /NBR
4	O - ring	NBR
5	Bolt	AISI 304
<b>Max. temperature</b>		<b>70°C</b>

DN	25	32	40	50	65	80
L (mm)	120	135	145	175	200	248
H (mm)	64	72	85	100	125	160
D (mm)	45	50	60	70	90	108
G	G1	G1 <sup>1</sup> / <sub>4</sub>	G1 <sup>1</sup> / <sub>2</sub>	G2	G2 <sup>1</sup> / <sub>2</sub>	G3
K <sub>vs</sub> (m <sup>3</sup> /h)	-	24	54	70	115	185
Weight (kg)	1,5	2,0	2,7	3,5	5,0	7,6

Data given can be changed without notice.

Edition 01/2018

ZETKAMA Sp. z o.o.  
Ul. 3 Maja 12  
PL 57-410 Ścinawka Średnia

Tel. +48 74 8652 193  
Tel. +48 74 8652 111  
Fax +48 74 8652 199

E-mail [export@zetskama.com.pl](mailto:export@zetskama.com.pl)  
[www.zetskama.com](http://www.zetskama.com)

**PRESSURE-TEMPERATURE RATINGS**

Acc. EN 1092-2	PN		-10°C ÷ 70°C
EN-GJS-500-7	16	bar	16

**TYPE**

Figure	Body material	Nominal diameter	Nominal pressure	Type
401	D Nodular cast iron EN-GJS-500-7	25-80 mm	C 16 bar	55 steel NBR coated ball; steel/NBR seat; epoxy paint

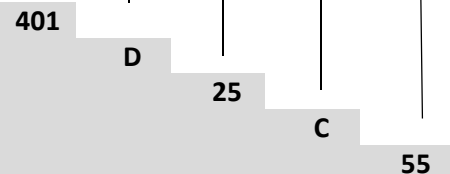
**ORDERING**

Figure	Body material	Nominal diameter	Nominal pressure	Type
401	D Nodular cast iron EN-GJS-500-7	25-80 mm	C 16 bar	55 steel NBR coated ball; steel/NBR seat; epoxy paint

**Order example acc. index**

401 D 25 C 55

Check valves, ends threaded, form Y-type  
 Nodular cast iron EN-GJS-500-7  
 Nominal diameter (mm)  
 Nominal pressure PN 16  
 Steel NBR coated ball; steel/NBR seat; epoxy paint



Data given can be changed without notice.

Edition 01/2018