

**ACCUTRAK™ 1040/9358/9044/9467 ROTARY POSITION MONITORS**  
WEATHERPROOF – NEMA

Weatherproof rotary position monitors with the option of high-performance resin, powder-coated aluminium and stainless steel enclosures. Impervious to moisture, chemicals and solvents, they offer a range of switching options



**TECHNICAL DATA**

**Agency approvals**

Enclosure standards (ANSI/NEMA 250)

Models 1040, 9358, 2004, 9044, 9467      NEMA 4, 4X

Switches

Models 1040

Model 2004

V3 mechanical, SPDT

V3 mechanical, SPDT

DPDT (Form CC) mechanical

Model 9358

Magnum (hermetically sealed proximity type) switches

Model 9044

Magnum (hermetically sealed proximity type) switches

MagPAC bifurcated switch pack

Model 9467

V3 mechanical, SPDT

V3 mechanical, gold plated contacts, SPDT

DPDT (Form CC) mechanical

**Enclosures**

Models 1040, 9358

Engineered resin

Models 2004, 9044

Aluminum

Model 9467

Engineered resin, Stainless steel (option)

**FEATURES**

**Models 1040/9358/2004/9044/9467**

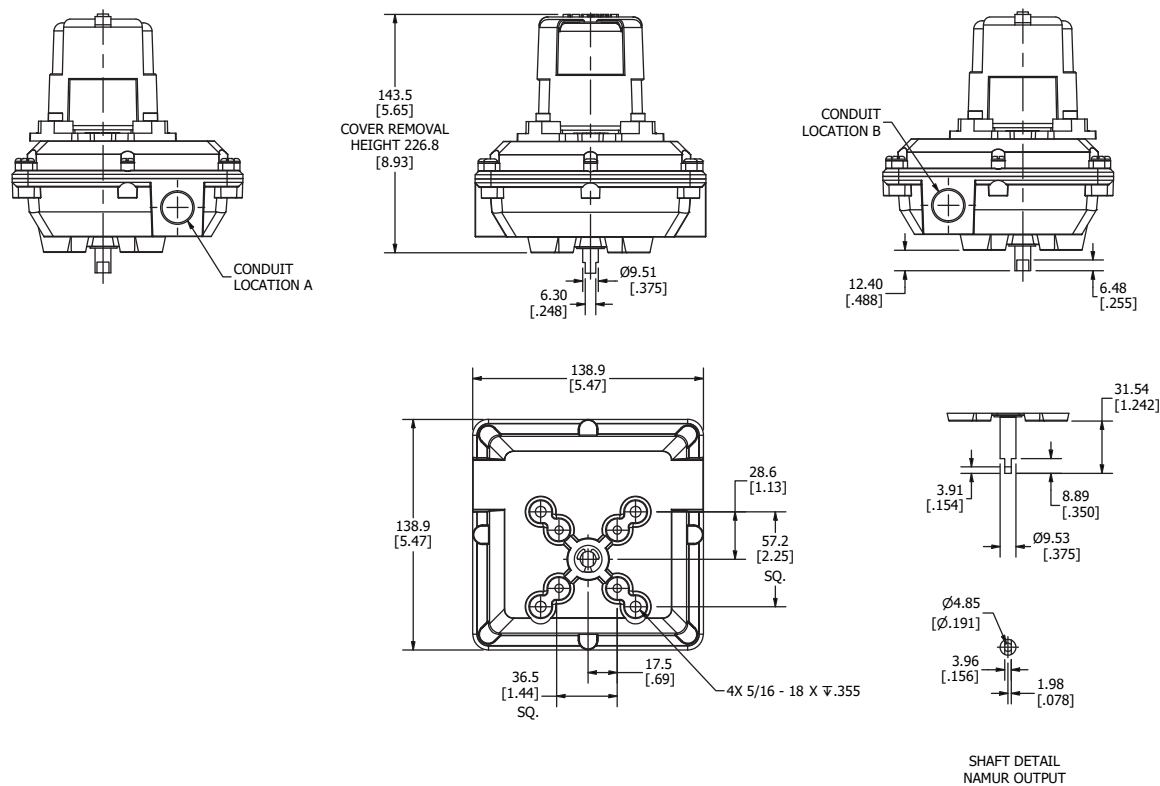
- Touch set cams are hand adjustable, spring loaded and self-locking providing quick calibration of position switches and sensors.
- Terminal strips are pre-wired and numbered with generous working space for ease of use.
- Strong durable Beacon™ offers 360° visual indication available in a choice of styles and colors.
- Additional conduit for easy field wiring and mounting accessories as standard.
- Standardized mounting pattern for easy adaptation to common bracketry.
- NAMUR shaft output compliant to VDI/VDE 3845 available.
- 4-20 mA position transmitter option.
- Engineered resin enclosure is robust yet lightweight; allows broad operating temperatures and provides exceptional chemical, UV and impact resistance.
- Aluminum enclosures with ultra-low copper content (0.2% maximum) ensure robust performance in corrosive environments.
- Heavy Duty 316 stainless steel enclosure available.

**GENERAL APPLICATION**

AccuTrak position monitors are ideal for manual and automated rotary valves. They provide consistent and accurate valve monitoring in a compact unit which can be mounted directly or via a valve actuator.

**ACCUTRAK™ 1040/9358/9044/9467 ROTARY POSITION MONITORS**  
 WEATHERPROOF – NEMA

MODELS 1040/9358 DIMENSIONS



Dimensions in inches, where available metric dimension (mm) in parentheses

**TECHNICAL SPECIFICATIONS**

**Materials of construction**

Enclosure	Engineered resin
Shaft and hardware	Stainless steel
Internal threaded inserts	Brass
Bushing	Oil impregnated bronze
Beacon visual indicator	Co-polyester

**Drive shaft**

Standard	Double-D with ¼" A/F
Option	NAMUR standard VDI/VDE 3845

**Available switches**

Model 1040	V3 mechanical switches, SPDT
Model 9358	Magnum, SPDT hermetically sealed switches with tungsten contacts
	Magnum, SPDT hermetically sealed switches with rhodium contacts

Options:

Model 9358	Stainless steel enclosure (size & dimensions differ)
------------	--

**NOTES**

1. See selection guide for standard conduit entries.
2. See switches and sensors data sheet for further information.
3. Please consult your sales office for any other requirements.



ACCUTRAK™ WEATHERPROOF ROTARY POSITION MONITORS

MODELS 9358/9044 SELECTION GUIDE

Base model									
9358	Engineered Resin Enclosure								
9044	Aluminum Enclosure								
Shaft output									
S	Standard (Double-D with 1/4" Flats)								
D	Direct mount to Keystone F89 actuators								
N	NAMUR								
Beacon									
BY	BM2-Y (Black Open/Yellow Closed - Standard)				B5	BM3-5 (3-way B5 Flowpath)			
RG	BM2-RG (Red Closed/Green Open)				B7	BM3-7 (3-way B7 Flowpath)			
FE	BM2-Y-FE (French/English)				B9	BM3-9 (3-way B9 Flowpath)			
B1	BM3-1 (3-way B1 Flowpath)				LP	BM2-Y-LP (Low Profile Standard)			
B3	BM3-3 (3-way B3 Flowpath)				FC	Flat Cover			
Conduit									
2A	Two 1/2" NPT (F)								
Position switches									
2M06	Two SPDT Magnum Switches - 8 pt. Terminal Strip								
2M12	Two SPDT Magnum Switches with Rhodium Contacts - 8 pt. Terminal Strip								
2M13	MagPAC Module (Two SPST Bifurcated Switches with LEDs; (Only Available for 9044)								
Position Transmitter									
00	Not available								
DS	4-20 mA Digital Signal Position Transmitter - 12 pt. Terminal Strip								
Unit Specialty Code <i>(leave blank for standard builds)</i>									
00124	316 Stainless Steel Enclosure (for 9044 Only)								
00710	12 - pt. Terminal Strip								
01351	SIL 3 - some restrictions may apply; consult Sales								
000BR	For Brazilian Approvals refer to OG-BRZ-024								
9044	N	BY	2A	2M13	00	= Model number <b>9044NBY2A2M1300</b>			

NOTES

For 120 VAC service, M13 (MagPAC) is recommended

For 24 VDC service below 1 watt, M12 (Rhodium Magnum Switches) or M13 (MagPAC) is recommended

For 24 VDC service above 1 watt, M06 (Tungsten Magnum Switches) or M13 (MagPAC) is recommended

Please contact your sales office for guidance on selecting the best possible combination for your control and monitoring requirements.

See Hazardous area classification technical bulletin for further information on global standards.