

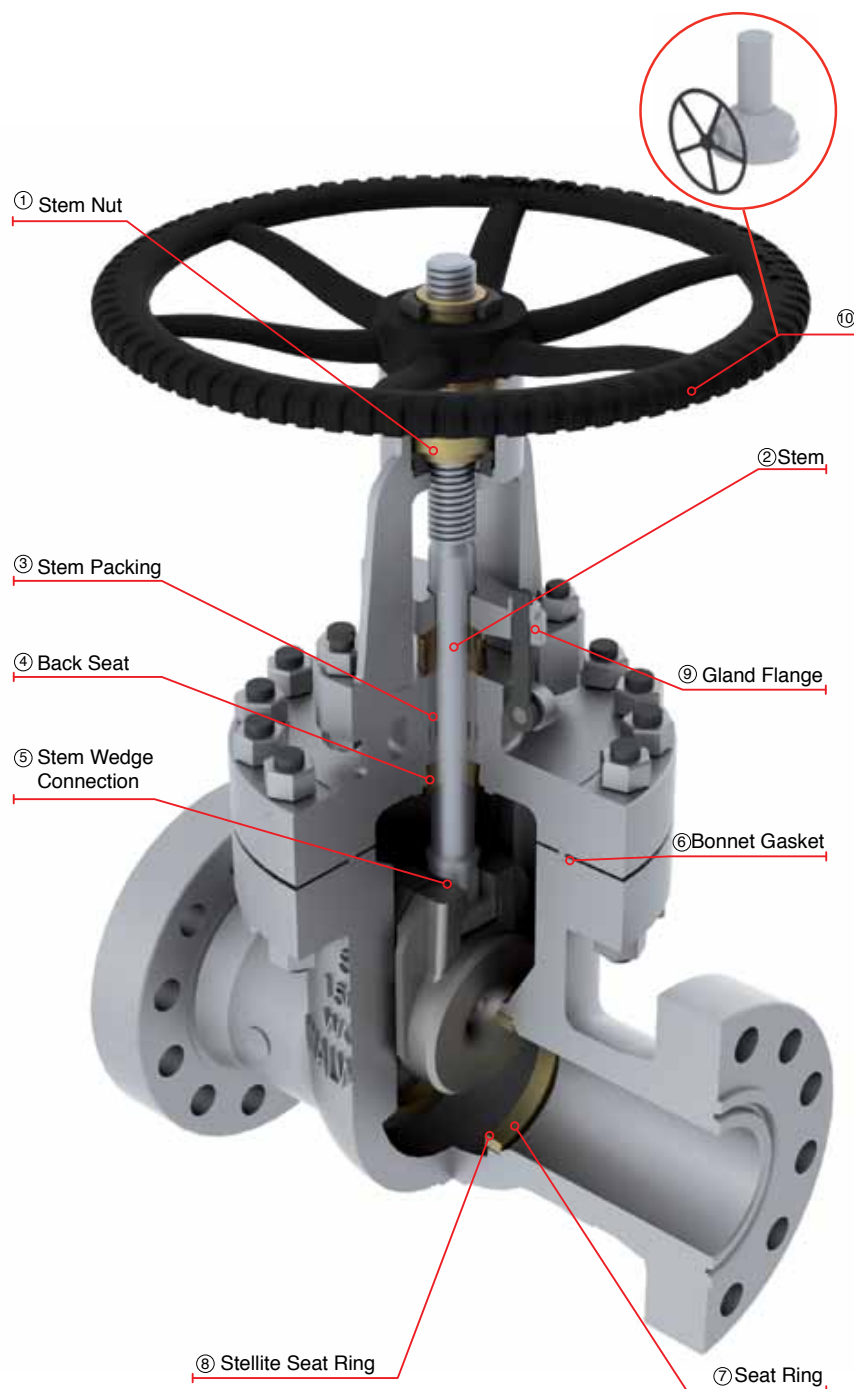
CAST STEEL GATE VALVES CLASS 1500

CAST STEEL GATE VALVES HANDWHEEL OR GEAR OPERATED, WITH RISING STEM AND OUT SIDE SCREW AND YOKE (OS&Y)

DESIGN FEATURES

- Gate valves design in accordance with API-600, solid, flexible or parallel slide wedge/Disc.
- Gate valves option in accordance with API-603 only for stainless steel & nickel alloys.
- Gate valves for Cryogenic service with gas column in accordance with BS-6364 upon request.
- Flange dimensions in accordance with ASME B16.5 for valves up to 24" nominal diameter.
- Hand-wheel, impact Hand-wheel, Chain-wheel, Gear operation, Electric, Pneumatic or Hydraulic Actuation as per Customer requirements.
- By-Pass, Lantern rings, grease injectors, special connections, etc.
- Low fugitive emissions control.
- NACE Service either MR-01-75 or MR-01-03.
- Test in accordance with API-598.
- Standard manufacturing flexible wedge from 2" and up

- ① Stem Nut, replaceable in line to avoid shut down of pipe line process.
- ② Rising stem with precision ACME single or double thread for quick operation. Surface finish suitable to seal properly to obtain low fugitive emissions.
- ③ Stem Packing is designed for optimum control of fugitive emissions leakage to the atmosphere. The ultra-low emission leakage rate is assured by the polished finish stem sealing area, the reduced diametrical clearances and the stem straightness control special designed packing. Live load packing arrangement available upon request.
- ④ Backseat, either threaded or welded designed to relieve back pressure on the stem packing when fully seated. Replacing stem packing under pressure is not recommended. Hard faced backseat available for severe service as per customer requirements.
- ⑤ Stem Wedge Connection
- ⑥ Body to Bonnet ring type joint is designed to apply a uniform load to the gasket to assure a leak proof seal.
- ⑦ Seat rings are seal welded to provide a bubble tight joint.
- ⑧ Stellite Seat Rings provide increased resistance to wear, abrasion and erosion of the sealing surfaces.
- ⑨ Two pieces arrangement gland flange and stem packing bushing for self-alignment to avoid stem damage.
- ⑩ Gate valves supplied handwheel or gear operated.



CAST STEEL GATE VALVES, CLASS 1500 (HANDWHEEL OPERATED)

Design Features

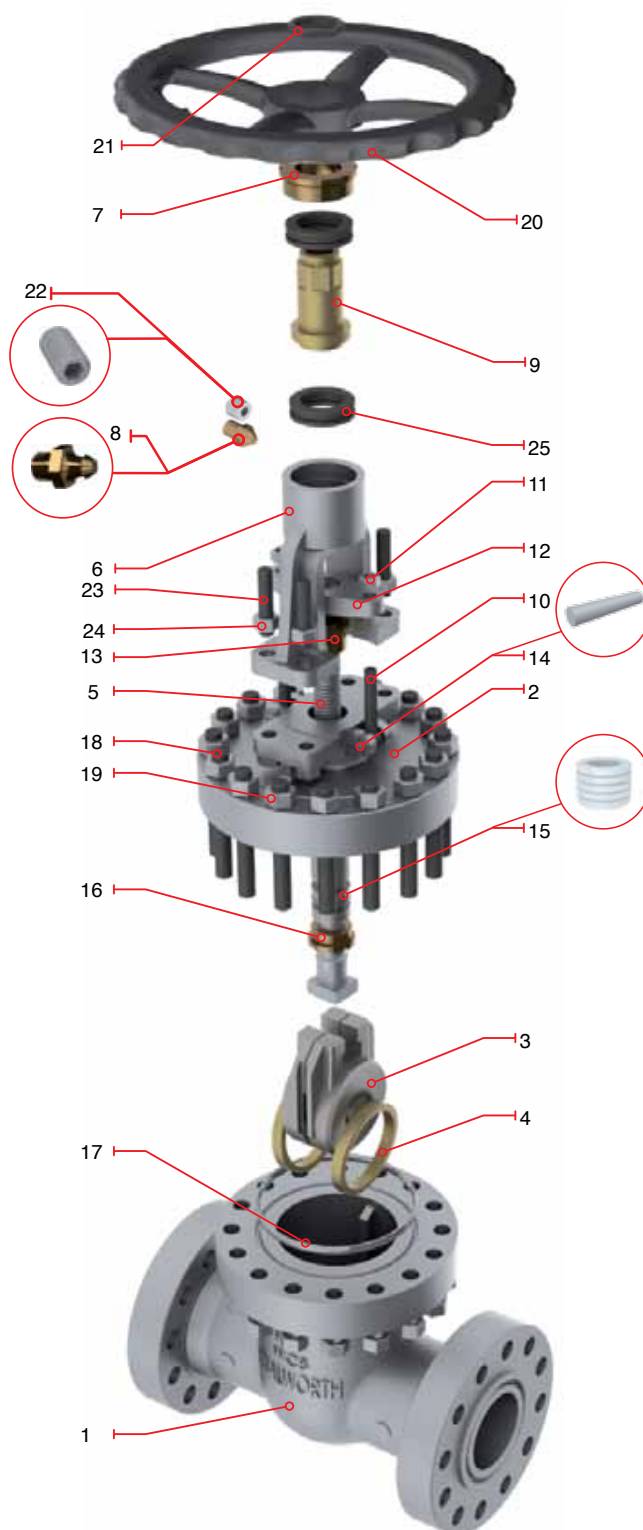
- Design in accordance with API-600
- Outside Screw & Yoke (OS & Y)
- Flexible Wedge as standard
- Stem Nut with bearings -Size 4" and larger
- Size 2" to 16" Normally Supplied with Handwheel as standard
- Flange dimensions as per ASME B16.5
- End to end dimensions as per ASME B16.10
- WE dimensions as per ASME B16.25

Catalog Figure No.	ID Plant Figure No.	Type of Ends
5262RF	5262F	Flanged Raised Face
5262RTJ	5262RJ	Flanged Ring Type Joint
5262WE	5262WE	Buttweld

Regular Bill of Materials

No.	Description	WCB Trim UT
1	Body	ASTM A 216 GR WCB
2	Bonnet	ASTM A 216 GR WCB
3	Wedge	ASTM A 216 GR WCB + 13% Cr.
4	Seat Ring	ASTM A 515 GR 70 + ST6
5	Stem	ASTM A 276 Type 410
6	Yoke	ASTM A 216 GR WCB
7	Stem Nut Retainer	ASTM A 36
8	Grease Fitting	Commercial Steel
9	Stem Nut	UNS C95600 or Ni-Resist
10	Eyebolt / Gland Flange Studs	Alloy Steel
11	Eyebolt Nut	ASTM A 307
12	Gland Flange	ASTM A 515 GR 70
13	Packing Bushing	ASTM A 108 GR 1020
14	Eye Lug Bolt / Eye Bolt Pin	Alloy Steel
15	Stem Packing	Graphite
16	Bonnet Bushing	ASTM A 276 Type 410
17	Ring Type Joint Gasket	ASTM A 108 GR 1010
18	Bonnet Stud	ASTM A 193 GR B7
19	Bonnet Stud Nut	ASTM A 194 GR 2H
20	Handwheel	ASTM A 197
21	Handwheel Nut	ASTM A 108 GR 1020
22	Set Screw	Alloy Steel
23	Yoke Bolt	Alloy Steel
24	Yoke Bolt Nut	ASTM A 307
25	Stem Nut Bearing	Commercial Steel
*26	Stem Nut Oil Seal	Rubber/Commercial Steel
*27	Identification Plate	Stainless Steel

*Not Shown



CAST STEEL GATE VALVES, CLASS 1500

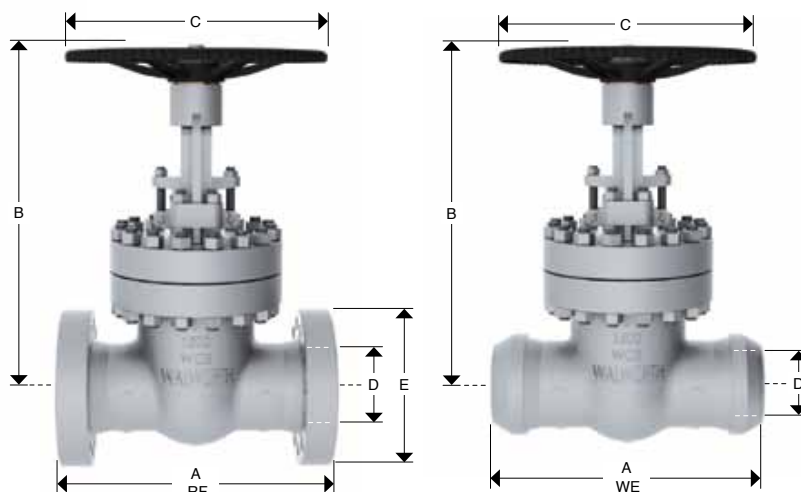
(HANDWHEEL OPERATED)



Design Features

- Design in accordance with API-600
- Outside Screw & Yoke (OS & Y)
- Flexible Wedge as standard
- Stem Nut with bearings: 4" and larger
- Size 2" to 16" Supplied with Handwheel as standard
- Flange dimensions as per ASME B16.5
- End to end dimensions as per ASME B16.10
- WE dimensions as per ASME B16.25

Catalog Figure No.	ID Plant Figure No.	Type of Ends
5262RF	5262F	Flanged Raised Face
5262RTJ	5262RJ	Flanged Ring Type Joint
5262WE	5262WE	Buttweld



Dimensions and Weights

D Nominal Diameter	mm	51	64	76	102	127	152	203	254	305
	in	2	2 1/2	3	4	5	6	8	10	12
A (RF and WE)	mm	368	419	470	546	673	705	832	991	1130
	in	14 1/2	16 1/2	18 1/2	21 1/2	26 1/2	27 3/4	32 3/4	39	44 1/2
A (RTJ)	mm	371	422	473	549	676	711	842	1000	1146
	in	14 5/8	16 5/8	18 5/8	21 5/8	26 5/8	28	33 1/8	39 3/8	45 1/8
B	mm	591	699	876	994	1080	1191	1435	1740	2054
	in	23 1/4	27 1/2	34 1/2	39 1/8	42 1/2	46 7/8	56 1/2	68 1/2	80 7/8
C	mm	356	406	457	508	559	559	660	914	914
	in	14	16	18	20	22	22	26	36	36
E	mm	216	244	267	311	375	394	483	584	673
	in	8 1/2	9 5/8	10 1/2	12 1/4	14 3/4	15 1/2	19	23	26 1/2
Weight 5262RF/RTJ	Kg	78.5	99	140	209	510	523	893	2010	3080
	lb	173	218	308	460	1122	1151	1965	4422	6776
Weight 5262WE	Kg	56	67	97	141	383	402	700	1685	2600
	lb	123	148	214	311	844	886	1543	3714	5732

CAST STEEL GATE VALVES, CLASS 1500 (GEAR OPERATED)

Design Features

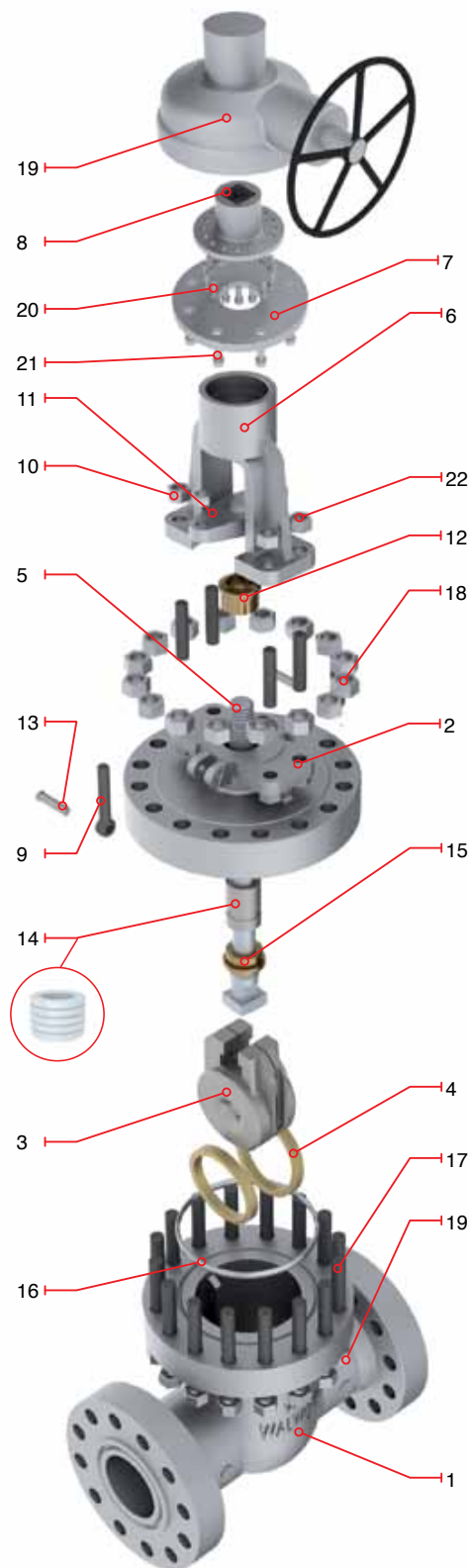
- Design in accordance with API-600
- Outside Screw & Yoke (OS & Y)
- Flexible Wedge as standard
- Size 18" to 24" Normally Supplied with gear box
- Flange dimensions as per ASME B16.5
- End to end dimensions as per ASME B16.10
- WE dimensions as per ASME B16.25
- Stem Nut with bearings: Size 4" and larger

Catalog Figure No.	ID Plant Figure No.	Type of Ends
5262RF	5262F	Flanged Raised Face
5262RTJ	5262RJ	Flanged Ring Type Joint
5262WE	5262WE	Buttweld

Regular Bill of Materials

No.	Description	WCB Trim UT
1	Body	ASTM A 216 GR WCB
2	Bonnet	ASTM A 216 GR WCB
3	Wedge	ASTM A 216 GR WCB + 13% Cr.
4	Seat Ring	ASTM A 515 GR 70 + ST6
5	Stem	ASTM A 276 Type 410
6	Yoke	ASTM A 216 GR WCB
7	Stem Nut Retainer	ASTM A 36
8	Stem Nut	ASTM B 148 UNS C95600
9	Eyebolt /Gland Flange Studs	Alloy Steel
10	Eyebolt Nut	ASTM A 307
11	Gland Flange	ASTM A 515 GR 70
12	Packing Bushing	ASTM A 108 GR 1020
13	Eye Lug Bolt / Eye Bolt Pin	Alloy Steel
14	Stem Packing	Graphite
15	Bonnet Bushing	ASTM A 276 Type 410
16	Ring Type Joint Gasket	ASTM A 108 GR 1010
17	Bonnet Stud	ASTM A 193 GR B7
18	Bonnet Stud Nut	ASTM A 194 GR 2H
19	Gear Operator	as customer requirements
20	Operator Bolts	Alloy Steel
21	Yoke Bolts	Alloy Steel
*22	Yoke Bolt Nut	ASTM A 307
*23	Identification Plate	Stainless Steel

*Not Shown

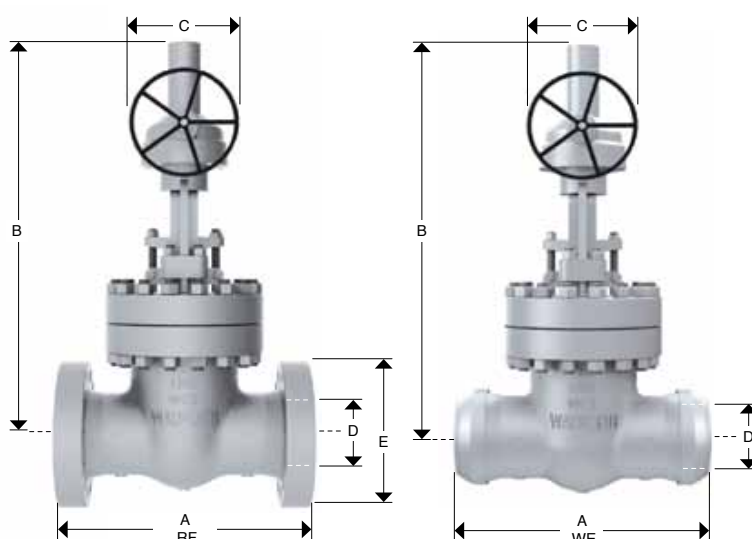


CAST STEEL GATE VALVES, CLASS 1500 (GEAR OPERATED)

Design Features

- Design in accordance with API-600
- Outside Screw & Yoke (OS & Y)
- Flexible Wedge as standard
- Size 18" to 24" Normally Supplied with gear box
- Flange dimensions as per ASME B16.5
- End to end dimensions as per ASME B16.10
- WE dimensions as per ASME B16.25
- Stem Nut with bearings: Size 4" and larger

Catalog Figure No.	ID Plant Figure No.	Type of Ends
5262RF	5262F	Flanged Raised Face
5262RTJ	5262RJ	Flanged Ring Type Joint
5262WE	5262WE	Buttweld



Dimensions and Weights

D Nominal Diameter	mm	356	406	457	508	610
	in	14	16	18	20	24
A (RF and WE)	mm	1257	1384	1537	1664	1943
	in	49 1/2	54 1/2	60 1/2	65 1/2	76 1/2
A (RTJ)	mm	1276	1407	1559	1686	1972
	in	50 1/4	55 3/8	61 3/8	66 3/8	77 5/8
B	mm	2172	2254	2057	2286	2743
	in	85 1/2	88 3/4	81	90	108
C	mm	914	914	762	762	762
	in	36	36	30	30	30
E	mm	749	826	914	984	1168
	in	29 1/2	32 1/2	36	38 3/4	46
Weight 5262RF	Kg	4480	5110	7105	9000	11500
	lb	9856	11242	15631	19800	25300
Weight 5262WE	Kg	3823	4270	5969	8100	10350
	lb	8428	9413	13132	17820	22770