

WALWORTH INDUSTRIAL BRONZE GLOBE VALVE CLASS 150 (300 WOG)

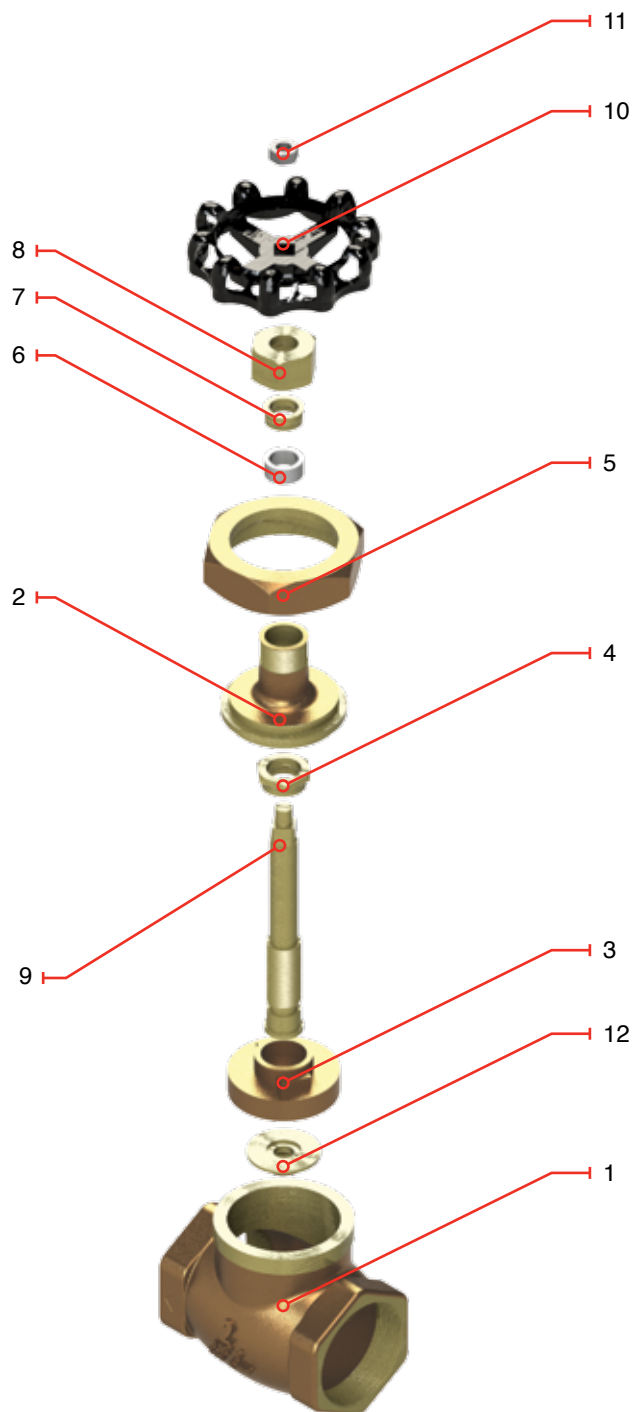
DESIGN FEATURES

- Design in accordance with MSS SP-80
- Rising Stem
- Bronze construction
- Integral seat rings
- Union Bonnet Design
- Soft Seat
- Threaded ends as per ANSI B1.20.1
- Face to face dimensions as per WALWORTH design
- Handwheel operated

CATALOG FIGURE NO.	TYPE OF ENDS
W95	Threaded Ends

REGULAR BILL OF MATERIALS

NO.	DESCRIPTION	MATERIALS
1	Body	Bronze B62
2	Bonnet	Bronze B62
3	Disc	Bronze B62
4	Disc Holder	Bronze B62
5	Union Nut	Bronze B62
6	Stem Packing	Non Asbestos
7	Gland	Brass B16
8	Packing Nut	Bronze B62
9	Stem	Bronze B62
10	Handwheel	Ductile Iron A536
11	Handwheel nut	Galvanized Steel
12	Disc Nut	Bronze B62

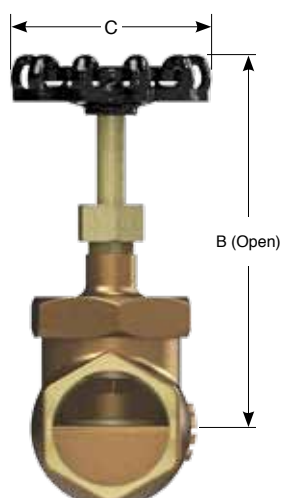
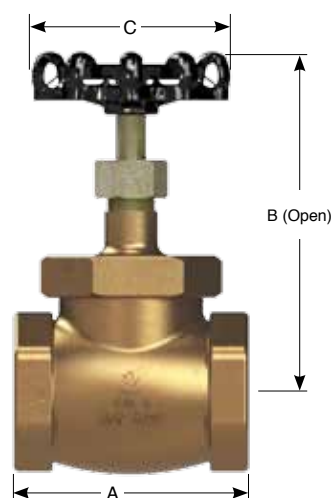


WALWORTH INDUSTRIAL BRONZE GLOBE VALVE **CLASS 150 (300 WOG)**

DESIGN FEATURES

- Design in accordance with MSS SP-80
- Rising Stem
- Bronze construction
- Integral seat rings
- Union Bonnet Design
- Soft Seat
- Threaded ends as per ANSI B1.20.1
- Face to face dimensions as per WALWORTH design
- Handwheel operated

CATALOG FIGURE NO.	TYPE OF ENDS
W95	Threaded Ends



DIMENSIONS AND WEIGHTS

D NOMINAL DIAMETER	mm	13	19	25	30	40	50
	in	1/2"	3/4"	1"	1 1/4"	1 1/2"	2"
A	mm	57.15	67.31	76.7	89.66	101.6	122.42
	in	2.25	2.65	3.02	3.53	4	4.82
B	mm	104.9	125.47	140.84	155.19	172.84	200.66
	in	4.13	4.94	5.54	6.11	6.8	7.9
C	mm	50.8	63.5	69.85	76.2	88.9	101.6
	in	2	2.5	2.75	3	3.5	4
Weight W95	kg	0.46	0.65	1.00	1.46	2.19	3.33
	lb	1.01	1.43	2.2	3.21	4.81	7.32
Cv	Flow coefficient	2.46	5.76	10.69	17.08	25.17	47.05