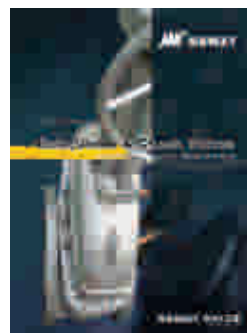
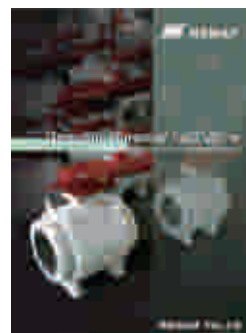




Cat.no.:E-PS



Cat.no.:E-GGC



Cat.no.:E-TMBV



Cat.no.:E-FBV



Cat.no.:E-DOV



Cat.no.:E-TOV



Cat.no.:E-PLV



Cat.no.:E-FSV



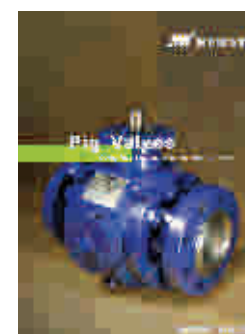
Cat.no.:E-DAV



Cat.no.:E-CPS



Cat.no.:E-CBV

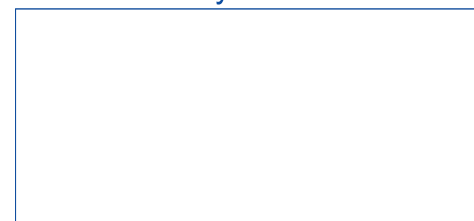


Cat.no.:E-PV

NW NEWAY 纽威
NEWAY VALVE (SUZHOU) CO., LTD.

No.666 Taishan Road, Suzhou New District, P.R. China
Post Code:215129
Tel: 86-512-666-51365
Fax: 86-512-666-18930-2102
E-mail: overseas.sales@neway.com.cn
<http://www.newayvalve.com>

Distributed by:



Cat.no.:E-GGC-2019

NW NEWAY 纽威

API 600 ASME B16.34

Gate, Globe & Check Valves

Complete Solutions for Industrial Valves

NEWAY VALVE

Cat.no.:E-GGC-2019

Table of Contents

Introduction	
1	Quality Commitment
2	Product Range
3	Technical Innovation
4	Introduction of Foundries
5	Advanced Manufacturing & Quality Control
6~7	Typical Product View
8	How to Order
Gate Valve	
9	Design Feature
10	Material List
11~13	Dimension & Weight
Globe Valve	
14	Design Feature
15	Material List
16~18	Dimension & Weight
Check Valve	
19	Design Feature
20	Material List
21~23	Dimension & Weight
Pressure Seal Valve	
High Temp.Cast Alloy Steel	
Pressure Seal Gate Valve	
26	Design Feature
27	Material List
28~29	Dimension & Weight
Pressure Seal Globe Valve	
30	Design Feature
31	Material List
32~33	Dimension & Weight
Pressure Seal Check Valve	
34	Design Feature
35	Material List
36~37	Dimension & Weight
Torque & Thrust	
Gear Operator	
Low Fugitive Emission Control	
46~48	NACE Introduction Special Design Feature



Complete Solutions for Industrial Valves

As a global leader of valve manufacturing, Neway (SSE:603699) is dedicated to the production, research, and development of industrial valves. Neway is committed to providing complete valve solutions to all industries through advanced engineering and innovation.

Neway’s product line includes Ball, Butterfly, Gate, Globe, Check, Nuclear, Control, Subsea, Safety valves. Our high quality standards and innovative ability are recognized by many global end users and EPCs. Neway valves are utilized in a wide variety of industries and working conditions such as Refining, Chemical, Coal Chemical, Offshore(including subsea), Air Separation, LNG, Nuclear Power, Power Generation, and Pipeline Transmission applications.

Facilities & Service

Neway has developed a sophisticated multi-plant management system operating one valve assembly plant, one API6A valve plant, three foundries, and one R&D center. Our largest assembly plant was expanded in 2013, and it now covers 230,000 square meters.

Advanced software (ANSYS, FE-Safe, CF-Design, Siemens PLM and NX) is applied here at Neway for the Research & Development of products. We use SAP to control the traceability and status of all products during the manufacturing process. In order to ensure the safety, eco-friendliness, and reliability of our products, we use the most advanced fire-safe, cryogenic, high pressure, and fugitive emission test equipment. As part of Neway’s global strategy, to provide better service to our customers, we have established our overseas subsidiaries in USA, Netherlands, Italy, Singapore and Dubai along with over 80 agents and distributors worldwide.

High Quality, High Value

Neway is dedicated to the pursuit of “Zero Defect ”. We maintain a quality management system that encompasses our entire operation from order entry, to final inspection. Through Neway’s continuous efforts, our products have achieved industrial certificates including ISO 9001, API 6A, API 6D, CE/PED, ASME N & NPT, TA-Luft, ABS, CU-TR and Fire-Safe approvals.

NORSOK



ISO 9001



API 6D



CE/PED

TA Luft



ABS

AD2000



Fire Safe Test

Neway recognizes the importance of valve quality for the safety and protection of personnel health and property. It is our quality commitment to focus our resources to provide our customers with first class products at a competitive price, that are designed, manufactured, inspected and tested in accordance with our customer’s specifications and that comply with all international standards.

With respect to the facts that the current industrial standards do not always take into consideration the likelihood and consequences of possible deterioration in service, related to specific service fluids or the external environment in which they operate. Our customers are requested to keep an open line of communication with our engineering department to identify and implement standards, that will provide valves with the possibility of deterioration in service, so as to ensure safety over the valves expected lifetime.

API 600 & B16.34 Bolted Bonnet Valve

Type	Gate Valve						Globe Valve						Check Valve													
Size	150	300	600	900	1500	2500	150	300	600	900	1500	2500	150	300	600	900	1500	2500								
2"	●	●	●	●	●	●	●	●	●	●	●	●	●	●	●	●	●	●								
2.5"	●	●	●	●	●	●	●	●	●	●	●	●	●	●	●	●	●	●								
3"	●	●	●	●	●	●	●	●	●	●	●	●	●	●	●	●	●	●								
4"	●	●	●	●	●	●	●	●	●	●	●	●	●	●	●	●	●	●								
5"	●	●	●	●	●	●	●	●	●	●	●	●	●	●	●	●	●	●								
6"	●	●	●	●	●	●	●	●	●	●	●	●	●	●	●	●	●	●								
8"	●	●	●	●	●	●	●	●	●	●	●	●	●	●	●	●	●	●								
10"	●	●	●	●	●	●	●	●	●	●	●	●	●	●	●	●	●	●								
12"	●	●	●	●	●	●	●	●	●	●	●	●	●	●	●	●	●	●								
14"	●	●	●	●	●	●	●	●	●	●	●	●	●	●	●	●	●	●								
16"	●	●	●	●	●	●	●	●	●	●			●	●	●	●	●	●	●							
18"	●	●	●	●	●	●	●	●	●	●			●	●	●	●	●	●	●							
20"	●	●	●	●	●	●	●	●	●	●			●	●	●	●	●	●	●							
24"	●	●	●	●	●	●	●	●	●	●			●	●	●	●	●	●	●							
26"	●	●	●	●	●	●	●	●	●	●	●	●	●	●	●	●	●	●								
28"	●	●	●	●	●								●	●	●	●	●		●	●						
30"	●	●	●	●	●								●	●	●	●	●		●	●						
32"	●	●	●	●	●								●	●	●	●	●		●	●						
36"	●	●	●	●	●								●	●	●	●	●		●	●						
40"	●	●	●	●	●								●	●	●	●	●									
42"	●	●	●										●	●	●											
48"	●	●	●										●	●	●											
52"	●	●	●										●	●	●											
54"	●	●	●										●	●	●											
56"	●	●	●										●	●	●											
60"	●	●	●	●	●								●	●	●	●	●									
64"	●	●	●										●	●	●				●	●	●	●	●			
66"	●																									
68"	●																									
70"	●																									
72"	●																									

API 600 & B16.34 Pressure Seal Valve

Type	Gate Valve				Globe Valve				Check Valve										
Size	600	900	1500	2500	600	900	1500	2500	600	900	1500	2500							
2"	●	●	●	●	●	●	●	●	●	●	●	●							
2.5"	●	●	●	●	●	●	●	●	●	●	●	●							
3"	●	●	●	●	●	●	●	●	●	●	●	●							
4"	●	●	●	●	●	●	●	●	●	●	●	●							
5"	●	●	●	●	●	●	●	●	●	●	●	●							
6"	●	●	●	●	●	●	●	●	●	●	●	●							
8"	●	●	●	●	●	●	●	●	●	●	●	●							
10"	●	●	●	●	●	●	●	●	●	●	●	●							
12"	●	●	●	●	●	●	●	●	●	●	●	●							
14"	●	●	●	●	●	●	●		●	●	●	●							
16"	●	●	●	●	●	●	●		●	●	●	●							
18"	●	●	●	●	●	●	●		●	●	●	●							
20"	●	●	●	●	●	●	●		●	●	●	●							
24"	●	●	●	●	●	●	●		●	●	●	●							
26"	●	●	●						●	●	●								
28"	●	●	●						●	●	●								
30"	●	●	●						●	●	●								
32"	●	●	●						●	●	●								
36"	●	●	●						●	●	●								
40"	●								●										
42"	●								●										
48"	●								●										
52"	●								●										
54"	●								●										
56"	●								●										
60"	●								●										

- Note:
- 1. Face to face and end to end dimension conform to BS 2080,ANSI B16.10 or ISO 5752.
 - 2. Flange is in line with ANSI B16.5 in type and dimension.
 - 3. BW end dimension conform to ANSI B16.25.
 - 4. Inspection and test in accordance with API 598 or BS EN 12266.
 - 5. Valves larger than 64"are manufactured per Neway standards.

Technical Innovation

With cutting-edge computer technology utilized, NEWAY Technical Center focuses on providing outstanding quality products and developing new lines. There is a highly educated and well-trained engineering team, supported by a comprehensive internal computer network which links the entire operations of design, manufacturing and administration.

NEWAY design philosophy is to develop a safe and cost-efficient valve. We introduced the latest Ansys, Fe-safe, CF-design and NX software for all our new product design research which include the advanced finite element analysis, fluid and fatigue analysis to virtually verify the new design prior to production, which has resulted in dramatically shortening development duration and assure a safe and cost-efficient final product.

NEWAY technical personnel are always ready to offer on line or on site technical training and support for all of its distributors, agents and end users.



High Temperature Test



Low Temperature Test



Low Fugitive Emission Test



Flow Coefficient Test



Fire Safe Test





Valve casting quality is of prime importance for product life, personnel and environmental safety, particularly in high temperature and high pressure service as valve serves as one of pressure-containing equipment in process-controlled pipeline. Thus, castings are always certified firstly by the customers requiring strictly before a valve manufacturer is pre-qualified and approved as a qualified supplier.



Compared with most of other competitors, we own three foundries: two of them work on producing large-sized sand castings by organic ester water glass, and two of them are for production of small-sized investment castings by lost-wax casting. Besides, each is equipped with all kinds of quality inspection facilities, such as spectrum instrument, non-destructive test machinery, and mechanical property test device. Against such backdrop, Neway can monitor the whole process of manufacture to ensure product quality, delivery and competitive price and enable Neway to remain a creditable supplier for every customer.



Automatic Molding Line



Exported Sand Mixer

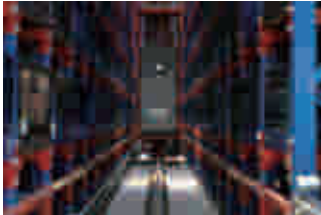


Automatic Forklift for Heat Treating

Supply Range & capacity :

Plant Name	Dafeng Foundry	Suzhou Foundry
Process Technology	Lost wax investment casting	Organic ester water glass sand casting
Size Range(in)	1/2" ~10"	2" ~64"
Pressure Rating	ANSI Class 150~600	ANSI Class 150~2500
Weight(Kg)	1~150	100~11000
Material	WCB, WCC, LCB, LCC, WC6, WC9, C5, C12, C12A, CF8, CF8M, CF3, CF3M, CN7M, Monel, Inconel, Duplex Steel, 4A,5A	
Monthly Capacity(Ton)	1500	1800
Quality Certificate	ISO9001,CE/PED, AD W0	ISO9001,CE/PED, Norsok

The latest computer technology has been extensively applied in NEWAY manufacturing, which includes a large number of numeric control machines (machining center, CNC horizontal and vertical lathe and CNC drilling machine) and ERP management system. Additionally, the data through all factories have been connected and shared. These facilitate resource integration, boost productivity, evidently enhancing machining quality and tightening process control.



NEWAY developed comprehensive and advanced inspection and test facilities to control the quality from rough castings or forgings to final products, which enable us to perform radiographic test, liquid penetrant test, magnetic-particle test, spectrum analysis, Material Positive Identification (MPI), impact test, tensile test, hardness test, fire safe test, cryogenic test, vacuum test, low fugitive emission test, high pressure gas test, ultrasonic testing and hydrostatic test.



1



2



3



4



- 1 20" Class 300 Gate Valve
- 2 42" Class 600 Gate Valve
- 3 64" Class 150 Gate Valve
- 4 18" Class 600 Cryogenic Gate Valve
- 5 32" Electric Gate Valve
- 6 24" Class 300 Pneumatically Actuated Gate Valve
- 7 24" Class 600 Gate Valve
- 8 16" Class 900 Pressure Seal Gate Valve
- 9 42" Class 150 Check Valve
- 10 A217 Gr. C12A Gate Valve

10



5



6



7

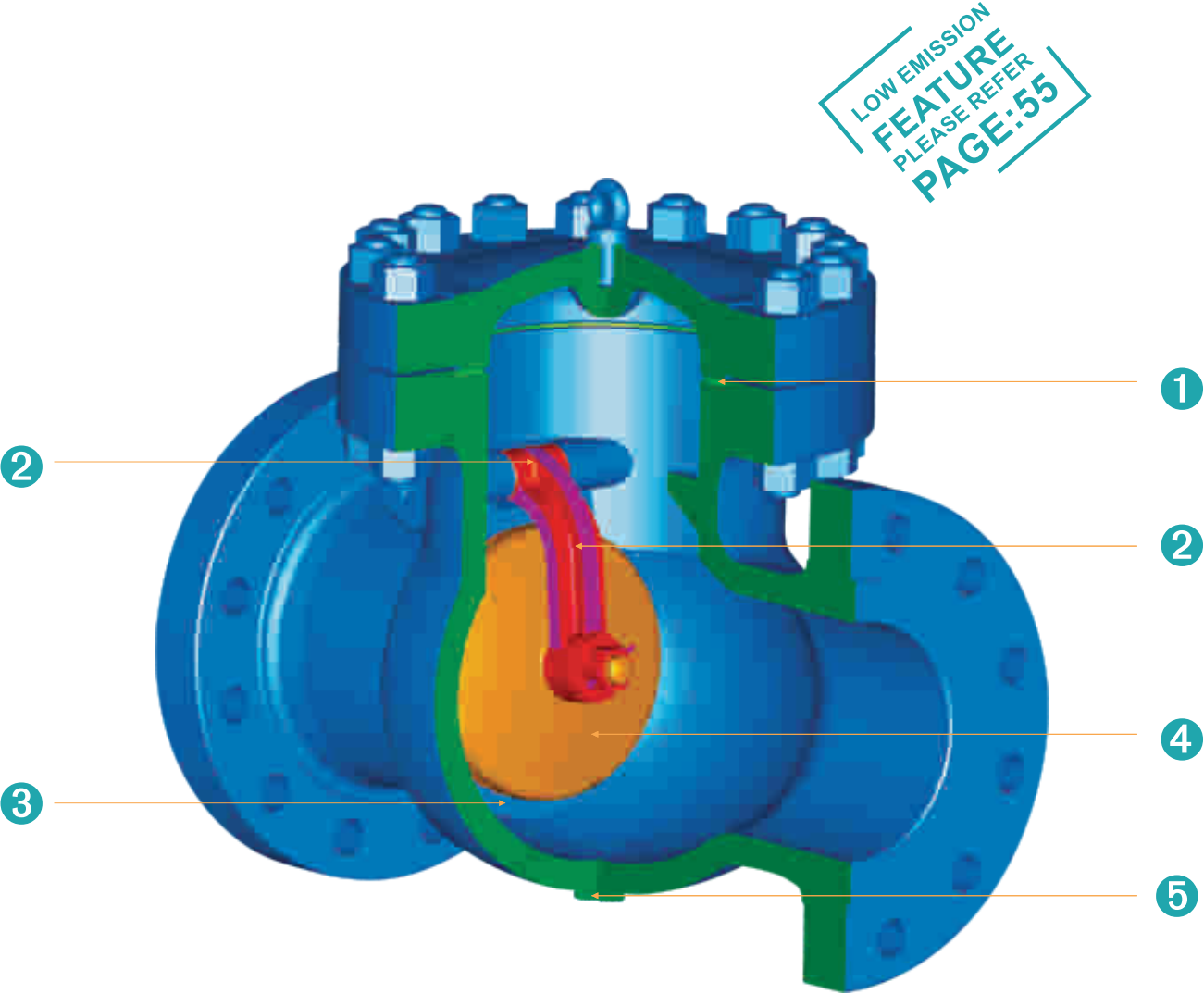


8



9





- 1 Flexible graphite gasket for Class 150 valves, spiral wound gasket for Class 300 & 600 valves, and ring joint for Class 900 & above valves or as an option for the Class 600 valves on customer request.
- 2 A hinge and hinge pin provided and mounted so as to permit full movement of the disc.
- 3 Standard renewable seal welded seat with stellite 6 while optional screwed-in seat.
- 4 Standard swing disc type, used in horizontal position for liquid service application or used in vertical position where liquid flow from bottom to top.
- 5 Provision of standard bosses for a drain tapping at location G at the lower part of body centerline. Additional bosses conform to customer requirements.

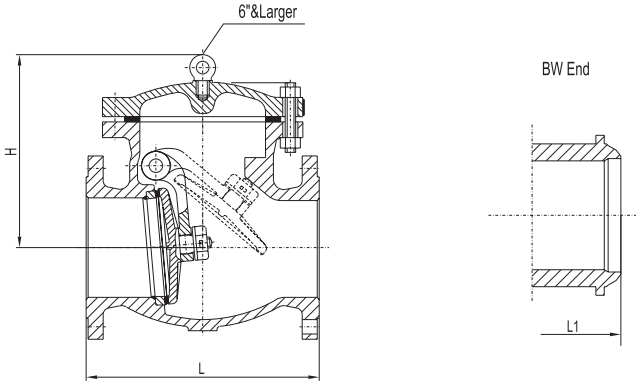
Part	Standard	Low Temperature Service	Stainless Steel	High Temperature Service	Sour Service
BODY	ASTM A216-WCB	ASTM A352-LCC	ASTM A351-CF8M	ASTM A217-WC9	ASTM A216-WCB
COVER	ASTM A216-WCB	ASTM A352-LCC	ASTM A351-CF8M	ASTM A217-WC9	ASTM A216-WCB
DISC	ASTM A217-CA15(4" & Smaller) & ASTM A216-WCB/ER410	ASTM A352-LCC/316 OVERLAY	ASTM A351-CF8M	ASTM A217-WC9/STL. OVERLAY	ASTM A217-CA15-NC(4" & Smaller) & ASTM A216-WCB/ER410-NC
HINGE	ASTM A216-WCB	ASTM A352-LCC	ASTM A351-CF8M	ASTM A217-WC9	ASTM A216-WCB
SEAT RING	ASTM A105/STL. OVERLAY	ASTM A182-F316/STL. OVERLAY	ASTM A182-F316/STL. OVERLAY	ASTM A182-F22/STL. OVERLAY	ASTM A105/STL. OVERLAY
HINGE PIN	ASTM A276-410	ASTM A276-316	ASTM A276-316	ASTM A276-410	ASTM A276-410-NC
PLUG FOR HINGE PIN	CARBON STEEL	ASTM A276-316	ASTM A276-316	STAINLESS STEEL	CARBON STEEL
WASHER	STAINLESS STEEL	ASTM A276-316	ASTM A276-316	STAINLESS STEEL	STAINLESS STEEL
DISC NUT	ASTM A276-420	ASTM A276-316	ASTM A276-316	ASTM A276-420	STAINLESS STEEL
DISC WASHER	ASTM A276-420	ASTM A276-316	ASTM A276-316	ASTM A276-420	STAINLESS STEEL
DISC SPLIT PIN	ASTM A276-420	ASTM A276-316	ASTM A276-316	ASTM A276-420	STAINLESS STEEL
BONNET RING JOINT	SOFT STEEL	ASTM A276-316	ASTM A276-316	ASTM A276-304	SOFT STEEL
BONNET STUD	ASTM A193-B7	ASTM A320-L7M	ASTM A193 B8 Class 2	ASTM A193-B16	ASTM A193-B7M
BONNET NUT	ASTM A194-2H	ASTM A194-7M	ASTM A194 8	ASTM A194-7	ASTM A194-2HM
RIVET	CARBON STEEL	CARBON STEEL	STAINLESS STEEL	CARBON STEEL	CARBON STEEL
NAME PLATE	STAINLESS STEEL	STAINLESS STEEL	STAINLESS STEEL	STAINLESS STEEL	STAINLESS STEEL
HOOK SCREW	CARBON STEEL	CARBON STEEL	STAINLESS STEEL	CARBON STEEL	CARBON STEEL

Class 150 Cast Carbon Steel Check Valve

BS 1868 Design, Bolted Cover,
Swing Type Disc

Figure NO.:

S1R,C00/8
S1B,C00/8



NPS		DN		L-L1(RF-BW)		H		WT(RF)	WT(BW)
in		mm		in	mm	in	mm	Kg	Kg
2"		50		8	203	6	147	15	10
2.5"		65		8.5	216	7	166	20	15.5
3"		80		9.5	241	7	174	25	21.2
3.5"		90		10.5	267	8	193	31	25
4"		100		11.5	292	8	198	41	32
5"		125		13	330	9	228	58	45
6"		150		14	356	12	297	75	64
8"		200		19.5	495	14	353	125	103
10"		250		24.5	622	15	391	268	189
12"		300		27.5	698	17	439	374	327
14"		350		31	787	19	480	495	423
16"		400		34	864	21	529	642	541
18"		450		38.5	978	23	586	784	696
20"		500		38.5	978	25	630	946	829
22"		550		42	1067	28	717	1155	980
24"		600		51	1295	29	746	1410	1276
26"		650		51	1295	32	806	1624	1250
28"		700		57	1448	38	968	1936	1680
30"		750		60	1524	38	969	2020	1945
32"		800		68	1727	40	1028	2965	2062
34"		850		77	1956	45	1150	3350	2740
36"		900		77	1956	49	1232	3738	3256
38"		950		85	2159	50	1276	4650	3810
40"		1000		85	2159	52	1320	5600	4600
42"		1050		89	2261	54	1378	5650	5246
44"		1100		90.2	2290	57	1450	6384	5250
46"		1150		91.3	2320	59	1510	7213	6000
48"		1200		92.5	2350	63	1593	9350	7650
50"		1250		93.7	2381	64	1637	9450	7750
52"		1300		95.7	2430	66	1680	9550	—
54"		1350		97.6	2480	68	1730	9650	—
56"		1400		101.6	2580	70	1780	9750	—
58"		1450		107.5	2730	72	1830	9850	—
60"		1500		110.2	2800	74	1880	9950	—

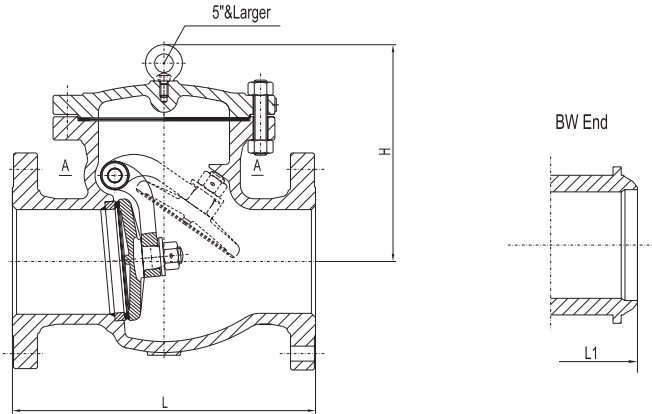
* (1) 关于60"以上阀门的详细资料请联系纽威销售部或技术部。

Class 300 Cast Carbon Steel Check Valve

BS 1868 Design, Bolted Cover,
Swing Type Disc

Figure NO.:

S3R,C00/8
S3B,C00/8



NPS		DN		L-L1(RF-BW)		H		WT(RF)	WT(BW)
in		mm		in	mm	in	mm	Kg	Kg
2"		50		10.5	267	6	158	22	14
2.5"		65		11.5	292	7	185	35	23
3"		80		12.5	318	8	194	38	30
4"		100		14	356	9	230	64	48
5"		125		15.7	400	12	298	82	60
6"		150		17.5	444	12	317	120	92
8"		200		21	533	15	380	230	170
10"		250		24.5	622	17	434	350	245
12"		300		28	711	20	505	495	360
14"		350		33	838	21	546	702	520
16"		400		34	864	23	594	882	565
18"		450		38.5	978	26	673	1102	850
20"		500		40	1016	29	728	1380	1004
22"		550		46.5	1180	31	793	1770	1430
24"		600		53	1346	34	858	2160	1842
26"		650		53	1346	39	999	2550	1995
28"		700		59	1499	42	1058	2960	2495
30"		750		62.8	1594	45	1140	3680	2780
32"		800		66.8	1697	47	1205	4525	3400
34"		850		70.9	1800	50	1269	5368	4025
36"		900		82	2083	52	1319	6280	5514
38"		950		86	2185	60	1535	6720	5040
40"		1000		96	2438	69	1750	7190	5390
42"		1050		103	2617	74	1870	7690	5750
44"		1100		104	2642	74	1880	8230	6170
46"		1150		104	2642	75	1900	8800	6600
48"		1200		105	2667	66	1675	9410	7050
50"		1250		104	2642	77	1945	10070	7550
52"		1300		106	2693	68	1720	10070	8030
54"		1350		114	2896	78	1990	11400	8550
56"		1400		121	3074	69	1765	12100	9050
58"		1450		120.1	3051	80	2035	12900	9670
60"		1500		137.9	3503	71	1810	13800	10350

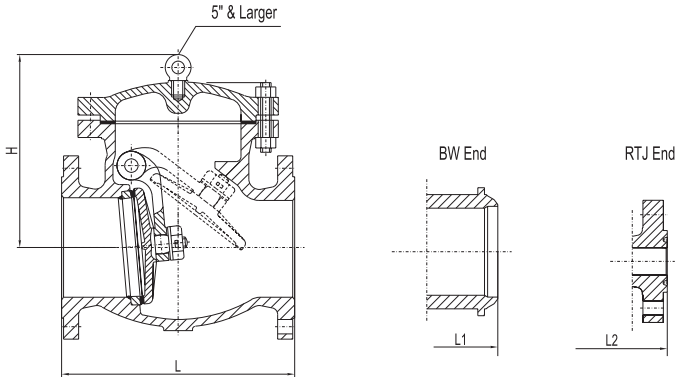
* (1) 关于60"以上阀门的详细资料请联系纽威销售部或技术部。

Class 600 Cast Carbon Steel Check Valve

BS 1868 Design, Bolted Cover,
Swing Type Disc

Figure NO.:

S6R,C00/8
S6B,C00/8



NPS		DN		L-L1(RF-BW)		L2(RTJ)		H		WT(RF)	WT(BW)
in		mm		in	mm	in	mm	in	mm	Kg	Kg
2"		50		11.5	292	11.61	295	7	187	30	23
2.5"		65		13	330	13.11	333	8	210	43	35
3"		80		14	356	14.13	359	9	232	56	43
4"		100		17	432	17.13	435	12	315	93	85
5"		125		20	508	20.12	511	14	355	96	82
6"		150		22	559	22.13	562	15	375	202	160
8"		200		26	660	26.1	663	17	427	339	233
10"		250		31	787	31.1	790	20	502	521	455
12"		300		33	838	33.11	841	22	570	875	616
14"		350		35	889	35.12	892	24	620	885	840
16"		400		39	991	39.13	994	28	723	1220	1030
18"		450		43	1092	43.11	1095	29	742	1620	1365
20"		500		47	1194	47.24	1200	32	817	2120	1888
22"		550		51	1295	51.38	1305	35	896	2685	2419
24"		600		55	1397	55.39	1407	38	974	3250	2950
26"		650		57	1448	57.52	1461	42	1075	4255	3619
28"		700		63	1600	63.5	1613	46	1165	5075	4360
30"		750		65	1651	65.51	1664	52	1324	5500	5338
32"		800		70	1778	70.63	1794	54	1375	7650	6500
34"		850		76	1930	76.61	1946	55	1408	7950	6760
36"		900		82	2083	82.64	2099	61	1542	9905	8895
38"		950		86	2185	86.65	2201	64	1622	10250	8700
40"		1000		90	2286	90.63	2302	67	1702	10600	9010
42"		1050		96	2438	96.61	2454	71	1800	10950	9308
44"		1100		97.3	2472	97.95	2488	77	1950	11300	9605
46"		1150		98.7	2506	99.29	2522	85	2150	11650	9903
48"		1200		100	2540	100.63	2556	85	2171	12000	10200
50"		1250		100	2540	100.63	2556	87	2200	12350	10498
52"		1300		102.5	2604	103.15	2620	89	2250	12700	10795
54"		1350		105	2668	105.67	2684	91	2300	13060	11101
56"		1400		107.6	2732	108.19	2748	93	2350	13430	11416
58"		1450		110.1	2796	110.71	2812	94	2400	13810	11739
60"		1500		112.6	2860	113.23	2876	96	2450	14200	12070

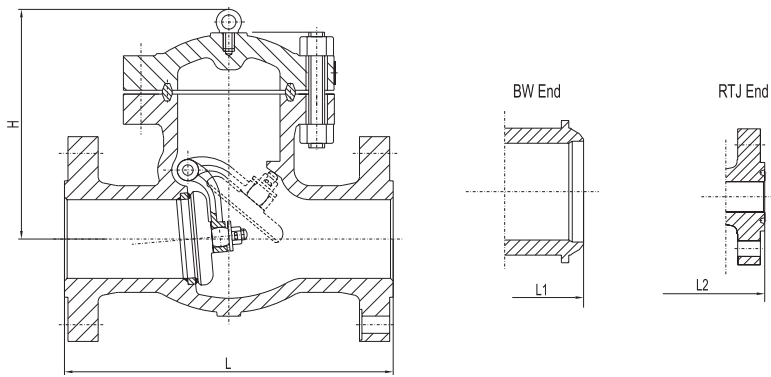
* (1) 关于60"以上阀门的详细资料请联系纽威销售部或技术部。

Class 900 Cast Carbon Steel Check Valve

BS 1868 Design, Bolted Cover,
Swing Type Disc

Figure NO.:

S9R,C00/8
S9B,C00/8
S9J,C00/8



NPS		DN		L-L1(RF-BW)		L2(RTJ)		H		WT(RF)	WT(BW)
in		mm		in	mm	in	mm	in	mm	Kg	Kg
2"		50		14.5	368	14.61	371	11	290	70	60
2.5"		65		16.5	419	16.61	422	13	323	100	86
3"		80		15	381	15.12	384	12	314	91	80
4"		100		18	457	18.11	460	14	362	150	115
5"		125		22	559	22.13	562	16	400	218	163
6"		150		24	610	24.13	613	17	438	230	176
8"		200		29	737	29.13	740	20	499	387	297
10"		250		33	838	33.11	841	23	574	632	485
12"		300		38	965	38.11	968	25	639	901	691
14"		350		40.5	1029	40.87	1038	27	690	1139	874
16"		400		44.5	1130	44.88	1140	30	766	1613	1237
18"		450		48	1219	48.5	1232	34	851	2000	1534
20"		500		52	1321	52.48	1333	39	980	3500	2685
22"		550		56.5	1435	57.24	1454	42	1059	4350	3336
24"		600		61	1549	61.73	1568	45	1138	5200	3988
26"		650		62	1575	62.83	1596	44	1121	6600	5030
28"		700		70	1778	70.83	1799	54	1372	7920	6075
30"		750		74.5	1892	75.31	1913	60	1521	9504	7290
32"		800		78.9	2004	79.72	2025	66	1671	11405	8748
34"		850		81.7	2075	82.76	2102	69	1746	13686	10497
36"		900		87.9	2232	88.94	2259	72	1821	16423	12596

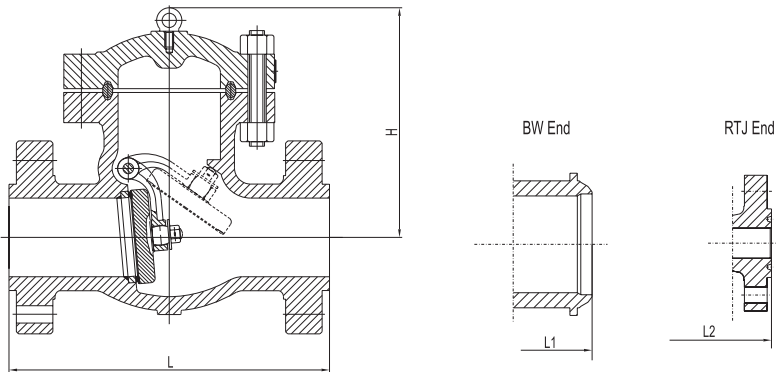
* (1) 关于36"以上阀门的详细资料请联系纽威销售部或技术部。

Class 1500 Cast Carbon Steel Check Valve

BS 1868 Design, Bolted Cover,
Swing Type Disc

Figure NO.:

S15R,C00/8
S15B,C00/8
S15J,C00/8



NPS		DN		L-L1(RF-BW)		L2(RTJ)		H		WT(RF)	WT(BW)
in		mm		in	mm	in	mm	in	mm	Kg	Kg
2"		50		14.5	368	14.61	371	11	290	70	56
2.5"		65		16.5	419	16.61	422	14	349	100	68
3"		80		18.5	470	18.62	473	13	338	150	75
4"		100		21.5	546	21.61	549	16	409	245	150
5"		125		26.5	673	26.61	676	18	465	400	278
6"		150		27.8	705	27.99	711	20	520	550	406
8"		200		32.8	832	33.15	842	24	611	1010	670
10"		250		39	991	39.37	1000	30	756	1550	1245
12"		300		44.5	1130	45.12	1146	32	807	2280	1639
14"		350		49.5	1257	50.24	1276	34	866	3060	2150
16"		400		54.5	1384	55.39	1407	39	978	4500	3140
18"		450		60.5	1537	61.38	1559	45	1147	5110	4220
20"		500		65.5	1664	66.38	1686	51	1284	6200	5430
22"		550		71	1804	72.13	1832	56	1410	7523	5266
24"		600		76.5	1943	77.64	1972	61	1539	9128	6390
26"		650		82	2083	83.11	2111	71	1794	11075	7753
28"		700		87.5	2222.5	88.62	2251	81	2049	13437	9406
30"		750		93	2362	94.09	2390	91	2304	16303	11412
32"		800		100	2540	101.1	2568	99	2514	19781	13847
34"		850		107.5	2730	108.58	2758	108	2743	24000	16800
36"		900		115.6	2935	116.65	2963	118	2993	29119	20383

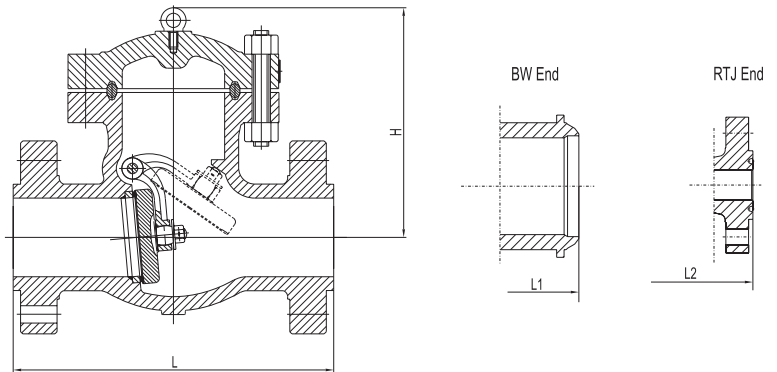
* (1) 关于36"以上阀门的详细资料请联系纽威销售部或技术部。

Class 2500 Cast Carbon Steel Check Valve

BS 1868 Design, Bolted Cover,
Swing Type Disc

Figure NO.:

S25R,C00/8
S25B,C00/8
S25J,C00/8



NPS		DN		L-L1(RF-BW)		L2(RTJ)		H		WT(RF)	WT(BW)
in		mm		in	mm	in	mm	in	mm	Kg	Kg
2"		50		17.8	451	17.87	454	13	328	145	102
2.5"		65		20	508	20.24	514	14	368	240	168
3"		80		22.8	578	22.99	584	16	408	330	231
4"		100		26.5	673	26.89	683	16	407	650	455
5"		125		31.3	794	31.77	807	19	495	1025	718
6"		150		36	914	36.5	927	23	582	1400	980
8"		200		40.2	1022	40.87	1038	29	725	2420	1694
10"		250		50	1270	50.87	1292	30	750	3750	2625
12"		300		56	1422	56.85	1444	32	825	5500	3850
14"		350		60	1524	60.87	1546	36	905	7150	5005
16"		400		68	1727	69.09	1755	39	1000	9250	6475
18"		450		74	1879	75.08	1907	43	1100	12000	8400
20"		500		80	2031	81.06	2059	48	1210	15500	10850
22"		550		85.9	2183	87.05	2211	52	1330	20000	14000
24"		600		91.9	2335	93.03	2363	57	1450	26000	18200

* (1) 关于24"以上阀门的详细资料请联系纽威销售部或技术部。