

## Energy products

# Gas staging valve C329245

One-inch tube size, 95 to 140 vdc,  
solenoid actuated (SA)



Meggitt's one-inch poppet style gas fuel staging valve is in use on a variety of aero-derivative industrial gas turbine engines. With millions of field operating hours, this design continues to prove the high reliability of Meggitt technology.

### Specifications

Function:	Gas fuel burner staging for aero-derivative turbine engine control
Type:	Two position, normally open, poppet, solenoid actuated
Physical size:	3.50" x 4.53" x 12.3" high
Weight:	26 pounds
Fluid connection type:	1" pipe, GE J534P58
Line pressure:	0 to 560 psia
Fluid temperature:	0 to 300°F maximum
Ambient temperature:	20 to 300°F
Performance:	
Operating speed:	Less than 150 msec full stroke response
Internal leakage:	0.1 pph maximum at all operating conditions
Pressure drop:	6.0 psid at 194 psia, 75°F and 360 pph air flowing through a single fitting
Electrical:	
Solenoid:	95 to 140 VDC, 1 ampere maximum
Position indicating switch:	10 to 32 VDC, SPDT
Electrical connector:	M83723/83G1407N

### Key features

- Fail-safe open (de-energized)
- Closed position indicating switch circuit
- 150 msec full stroke response time
- Used on both DLE and SAC turbine engines
- Non incendiary design, CSA/UL certified for NEC class 1, division 2, group D, temp code T2C
- All stainless steel valve and body materials for NACE compliance
- No maintenance required under normal conditions

## Meggitt Control Systems

### Our product competencies & services:

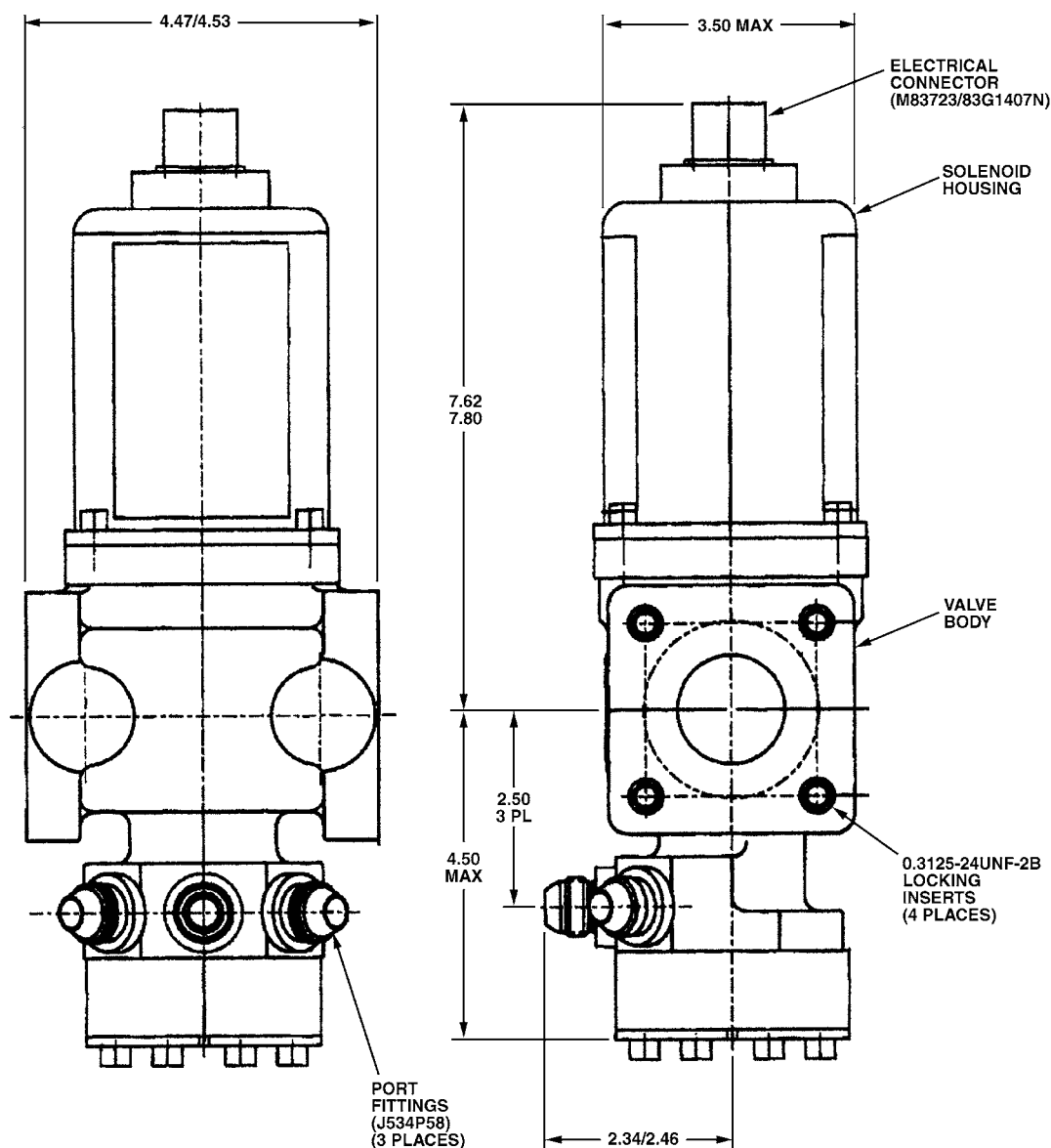
Aerospace valves | Thermal management solutions | Environmental control systems | Electro-mechanical products  
Ground fueling products | **Energy products** | Aftermarket services

**MEGGITT**  
smart engineering for  
extreme environments

## Energy products

# Gas staging valve C329245

## Key dimensions



NOTE: ALL DIMENSIONS SHOWN ARE IN INCHES.

## Contact

### Meggitt Controls

12838 Saticoy St  
North Hollywood  
California 91605-3505  
USA

Telephone: (818) 765-8160  
FAX: (818) 759-2194

[www.meggitt.com](http://www.meggitt.com)

## Meggitt Control Systems

### Our product competencies & services:

Aerospace valves | Thermal management solutions | Environmental control systems | Electro-mechanical products  
Ground fueling products | Energy products | Aftermarket services

**MEGGITT**  
smart engineering for  
extreme environments

## Energy products

# Gas staging valve C329245

One-inch tube size, 95 to 140 vdc,  
solenoid actuated (SA)



Meggitt's one-inch poppet style gas fuel staging valve is in use on a variety of aero-derivative industrial gas turbine engines. With millions of field operating hours, this design continues to prove the high reliability of Meggitt technology.

### Specifications

Function:	Gas fuel burner staging for aero-derivative turbine engine control
Type:	Two position, normally open, poppet, solenoid actuated
Physical size:	3.50" x 4.53" x 12.3" high
Weight:	26 pounds
Fluid connection type:	1" pipe, GE J534P58
Line pressure:	0 to 560 psia
Fluid temperature:	0 to 300°F maximum
Ambient temperature:	20 to 300°F
Performance:	
Operating speed:	Less than 150 msec full stroke response
Internal leakage:	0.1 pph maximum at all operating conditions
Pressure drop:	6.0 psid at 194 psia, 75°F and 360 pph air flowing through a single fitting
Electrical:	
Solenoid:	95 to 140 VDC, 1 ampere maximum
Position indicating switch:	10 to 32 VDC, SPDT
Electrical connector:	M83723/83G1407N

### Key features

- Fail-safe open (de-energized)
- Closed position indicating switch circuit
- 150 msec full stroke response time
- Used on both DLE and SAC turbine engines
- Non incendiary design, CSA/UL certified for NEC class 1, division 2, group D, temp code T2C
- All stainless steel valve and body materials for NACE compliance
- No maintenance required under normal conditions

## Meggitt Control Systems

### Our product competencies & services:

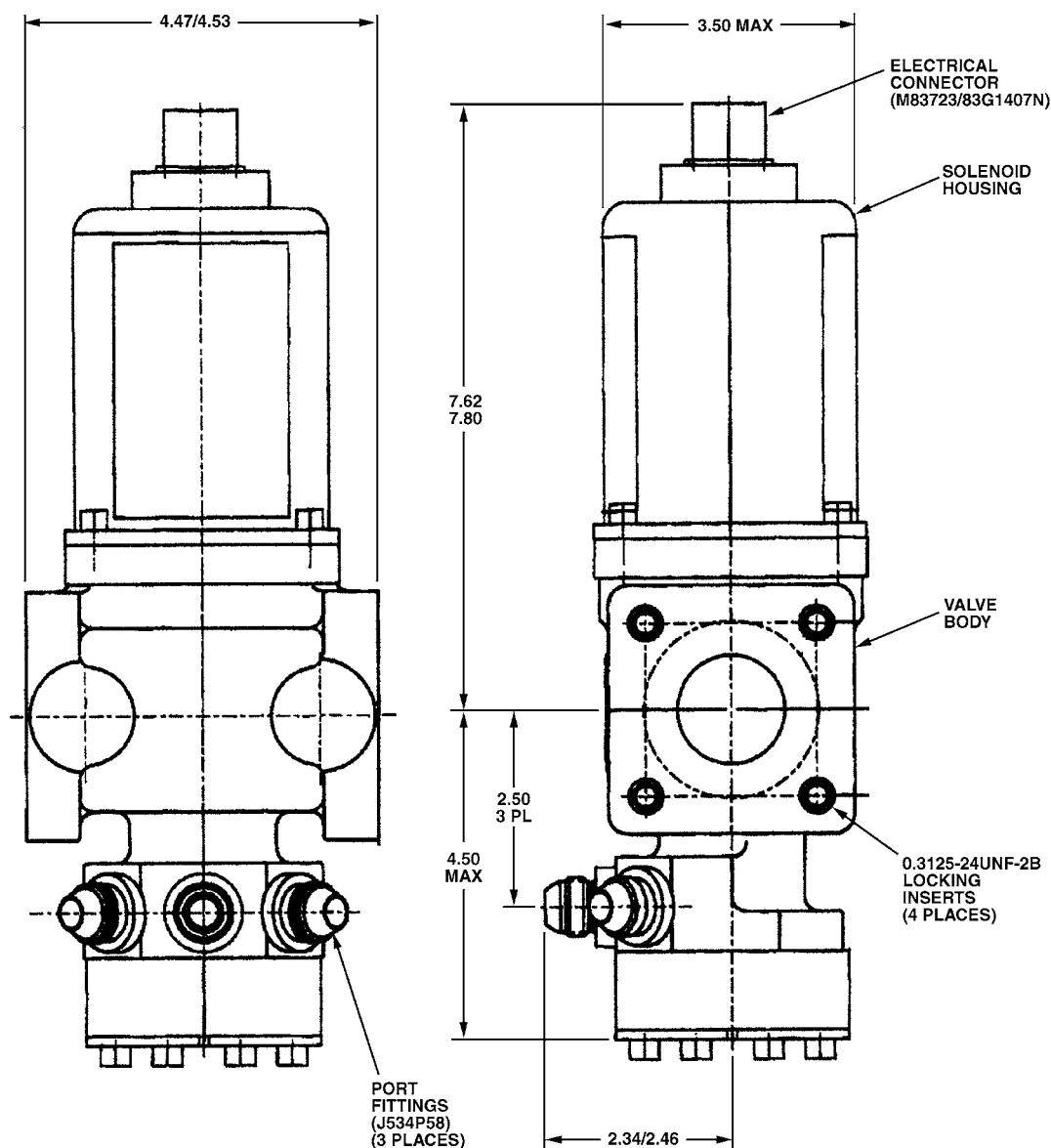
Aerospace valves | Thermal management solutions | Environmental control systems | Electro-mechanical products  
Ground fueling products | **Energy products** | Aftermarket services

**MEGGITT**  
smart engineering for  
extreme environments

## Energy products

# Gas staging valve C329245

## Key dimensions



NOTE: ALL DIMENSIONS SHOWN ARE IN INCHES.

## Contact

### Meggitt Controls

12838 Saticoy St  
North Hollywood  
California 91605-3505  
USA

Telephone: (818) 765-8160  
FAX: (818) 759-2194

[www.meggitt.com](http://www.meggitt.com)

## Meggitt Control Systems

### Our product competencies & services:

Aerospace valves | Thermal management solutions | Environmental control systems | Electro-mechanical products  
Ground fueling products | Energy products | Aftermarket services

**MEGGITT**  
smart engineering for  
extreme environments

## Energy products

# Gas fuel staging valve C329235

One-inch tube size, 95 to 140 vdc, solenoid actuated (SA)



Meggitt's one-inch poppet style gas fuel staging valve is in use on a variety of industrial gas turbine engines. With millions of field operating hours, this design continues to prove the high reliability of Meggitt design technology.

### Specifications

<b>Function:</b>	Gas fuel burner staging for aero-derivative turbine engine control
<b>Type:</b>	Two position, three way, normally open, poppet, solenoid actuated
<b>Physical size:</b>	3.50" x 4.50" x 12.21" high
<b>Weight:</b>	26 pounds
<b>Fluid connection type:</b>	1" pipe, GE J534P58
<b>Line pressure:</b>	0 to 560 psia
<b>Fluid temperature:</b>	0 to 300°F maximum
<b>Ambient temperature:</b>	20 to 300°F
<b>Performance:</b>	
<b>Operating speed:</b>	Less than 150 msec full stroke response
<b>Internal leakage:</b>	0.1 pph maximum at all operating conditions
<b>Pressure drop:</b>	6.0 psid at 194 psia, 75°F and 360 pph air flowing through a single fitting
<b>Electrical:</b>	
<b>Solenoid:</b>	95 to 140 VDC, 1 ampere maximum
<b>Position indicating switch:</b>	10 to 32 VDC, SPDT
<b>Electrical connector:</b>	M83723/83G1407N

### Key features

- Fail-safe open (de-energized)
- Closed position indicating switch circuit
- 150 msec full stroke response time
- Used on both DLE and SAC turbine engines
- Non incendiary design, CSA/UL certified for NEC class 1, division 2, group D, temp code T2C
- All stainless steel valve and body materials for NACE compliance
- No maintenance required under normal conditions

## Meggitt Control Systems

### Our product competencies & services:

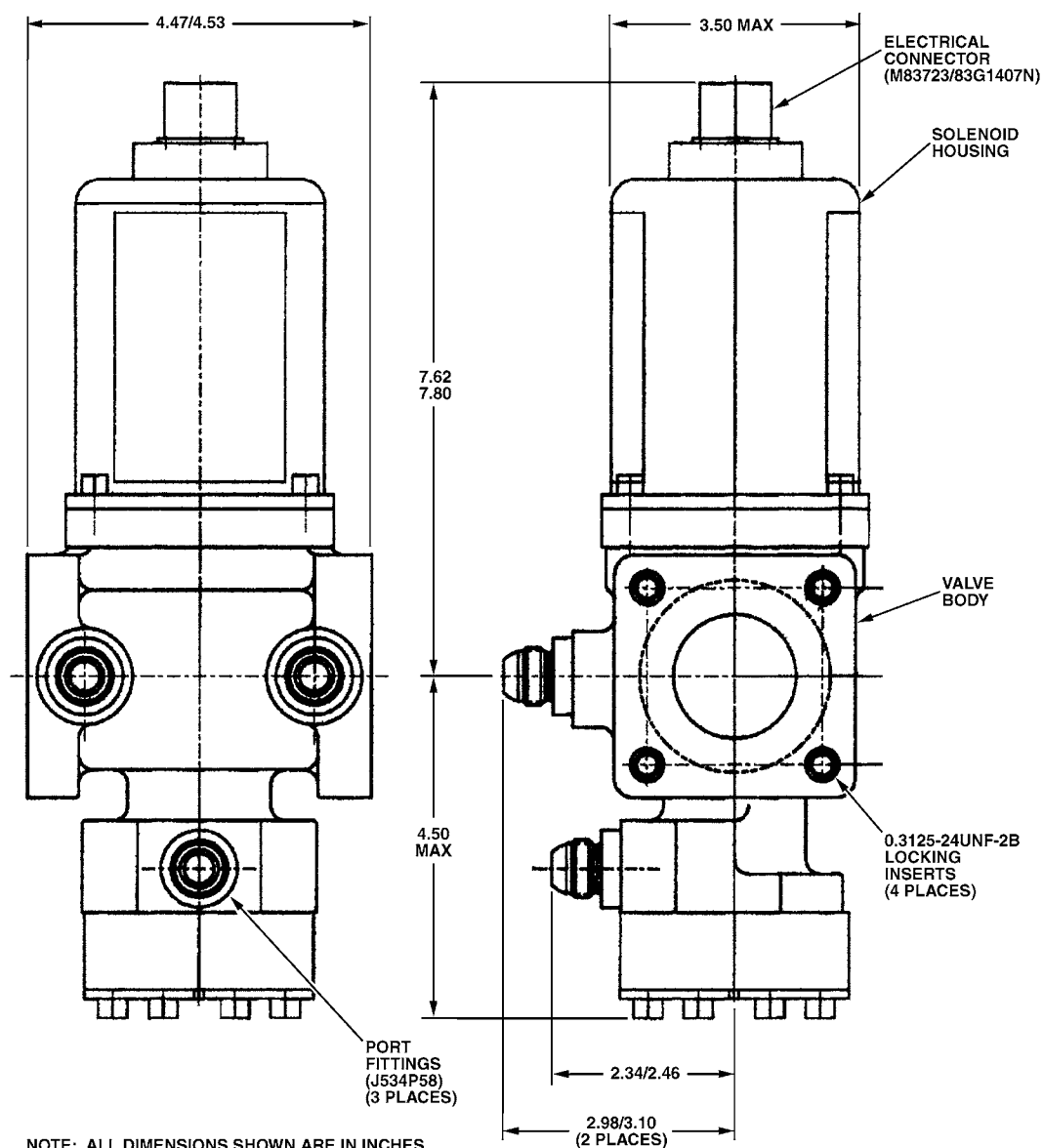
Aerospace valves | Thermal management solutions | Environmental control systems | Electro-mechanical products  
Ground fueling products | **Energy products** | Aftermarket services

**MEGGITT**  
smart engineering for  
extreme environments

## Energy products

# Fuel staging valve C329235

## Key dimensions



## Contact

### Meggitt Controls

12838 Saticoy St  
North Hollywood  
California 91605-3505  
USA

Telephone: (818) 765-8160  
FAX: (818) 759-2194

[www.meggitt.com](http://www.meggitt.com)

## Meggitt Control Systems

### Our product competencies & services:

Aerospace valves | Thermal management solutions | Environmental control systems | Electro-mechanical products  
Ground fueling products | Energy products | Aftermarket services

**MEGGITT**  
smart engineering for  
extreme environments

## Energy products

# Gas staging valve C327875

One-inch port, 125 vdc,  
solenoid actuated (SA)



Meggitt's one-inch poppet style gas fuel staging valve is in use on a variety of industrial gas turbine engines. Millions of field operating hours continue to prove the high reliability of Meggit design technology.

### Specifications

Type:	Normally open, poppet, solenoid actuated, 125 VDC
Function:	Fuel gas flow shutoff for aero-derivative turbine engines
Physical size:	3.57" wide, 3.57 deep, 12.04" high
Weight:	26 pounds maximum
Line pressure:	0 to 560 psia
Fluid temperature:	-40 to 300°F
Ambient temperature:	-40 to 300°F
Performance:	
Pressure drop:	7.5 psid at 495 psia, 150°F and 840 pph
Internal leakage:	0.1 pph maximum at all operating conditions
Operating time:	150 msec maximum full stroke response to fully open or fully closed position
Electrical:	
Solenoid:	Continuous duty, 125 VDC nominal (95 to 140 VDC), 1 ampere maximum
Closed position indicating switch:	10 to 32 VDC, 3-wire, SPDT
Electrical connector:	M83723/83G1407N

### Key features

- Normally open, fail open
- Closed position indicating switch circuit
- 150 msec full stroke response time, open or close
- High temperature poppet seal
- Used on both DLE and SAC turbine engines
- Non incendiary design, CSA/UL certified for NEC class 1, division 2, group D, temp code T2C.
- All stainless steel valve and body materials for NACE compliance
- No maintenance required under normal conditions

## Meggitt Control Systems

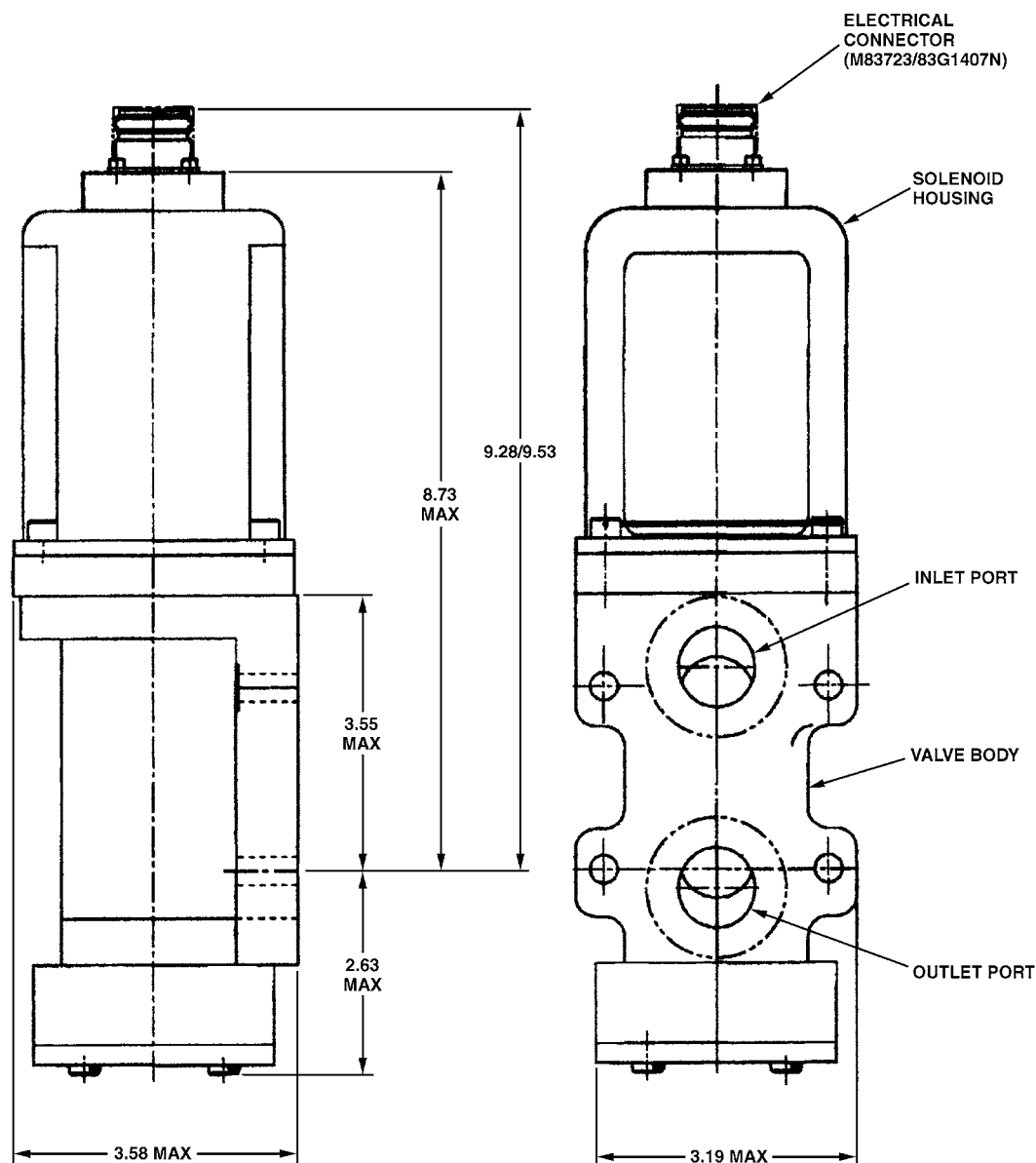
**Our product competencies & services:**  
Aerospace valves | Thermal management solutions | Environmental control systems | Electro-mechanical products  
Ground fueling products | Energy products | Aftermarket services

**MEGGITT**  
smart engineering for  
extreme environments

## Energy products

# Gas fuel staging valve C327875

## Key dimensions



NOTE: ALL DIMENSIONS SHOWN ARE IN INCHES.

## Contact

### Meggitt Controls

12838 Saticoy St  
North Hollywood  
California 91605-3505  
USA

Telephone: (818) 765-8160  
FAX: (818) 759-2194

[www.meggitt.com](http://www.meggitt.com)

## Meggitt Control Systems

### Our product competencies & services:

Aerospace valves | Thermal management solutions | Environmental control systems | Electro-mechanical products  
Ground fueling products | Energy products | Aftermarket services

**MEGGITT**  
smart engineering for  
extreme environments



## Energy products

# Liquid fuel staging valve C236435

One-inch tube size, 95 to 140 vdc,  
solenoid actuated (SA)



Meggitt's one-inch poppet style liquid fuel staging valve is used on a variety of aero-derivative industrial gas turbine engines. With millions of field operating hours, this design continues to prove the high reliability of Meggitt technology.

### Specifications

<b>Function:</b>	Liquid fuel staging for aero-derivative turbine engine control
<b>Type:</b>	Two position, normally open, poppet, solenoid actuated
<b>Physical size:</b>	3.70" x 5.84" x 15.49" high
<b>Weight:</b>	26.8 pounds
<b>Fluid connection type:</b>	1" pipe, SAE J534P60
<b>Line pressure:</b>	0 to 1200 psig; 0 to 800 psid across closed valve
<b>Fluid temperature:</b>	-20 to 150°F
<b>Ambient temperature:</b>	-40 to 250°F
<b>Performance:</b>	
Operating speed:	Less than 150 msec full stroke response
Internal leakage:	ANSI/FCI 70-2 class V
Pressure drop:	5 psid at 12 gpm
<b>Electrical:</b>	
Solenoid:	95 to 140 VDC, 1 ampere maximum
Closed position indicating switch:	10 to 32 VDC, SPDT

### Key features

- Fail-safe closed (de-energized)
- Closed position indicating switch circuit
- 150 msec full stroke response time
- Used on both DLE and SAC turbine engines
- Non incendiary design, CSA/UL certified for NEC class 1, division 2, group D, T2C CE-ATEX group II, category 3, zone 2, EEx nC II T2, CE-PED certified
- All stainless steel valve and body materials for NACE compliance
- No maintenance required under normal conditions

## Meggitt Control Systems

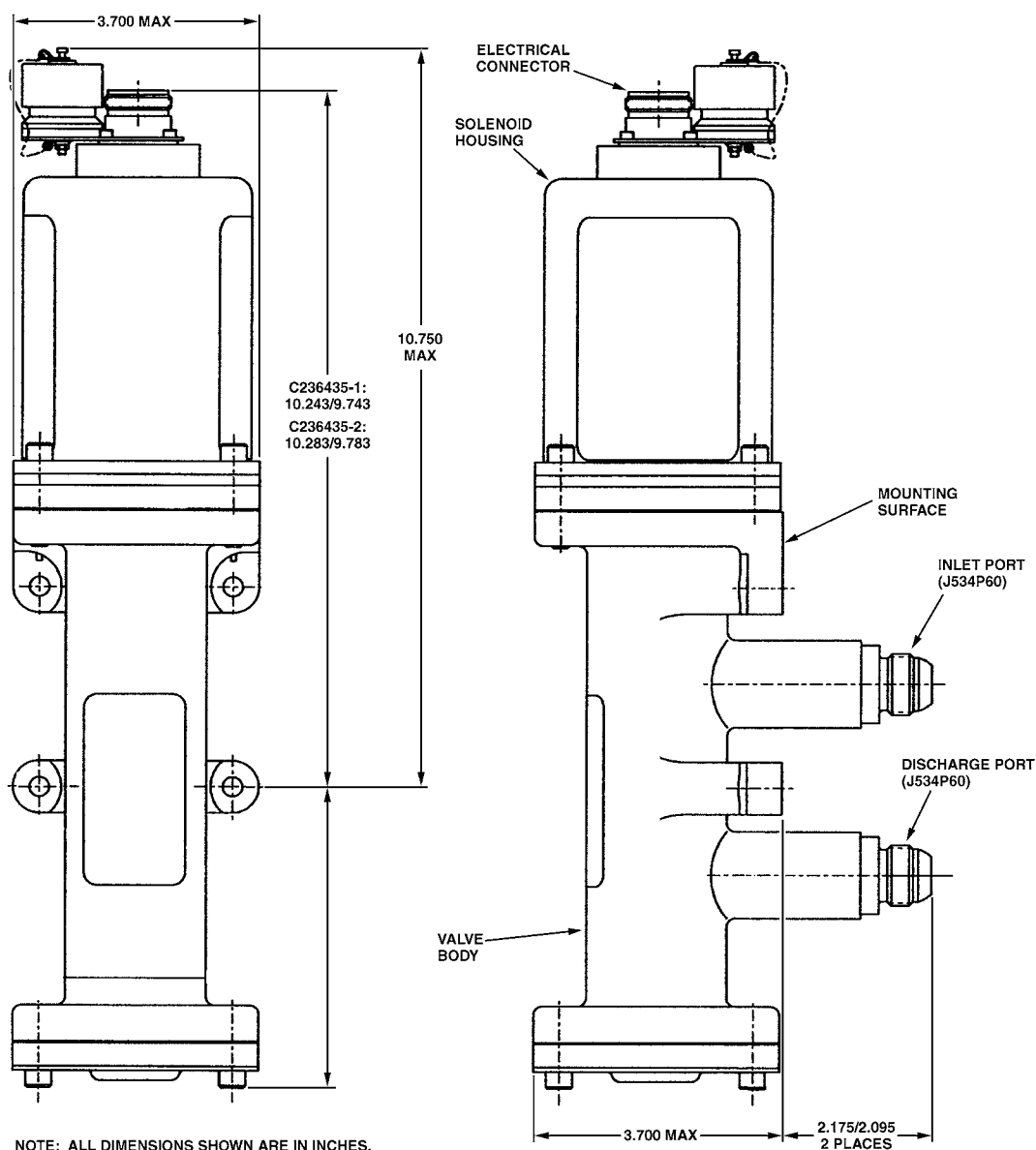
**Our product competencies & services:**  
Aerospace valves | Thermal management solutions | Environmental control systems | Electro-mechanical products  
Ground fueling products | **Energy products** | Aftermarket services

**MEGGITT**  
smart engineering for  
extreme environments

## Energy products

# Fuel staging valve C236435

## Key dimensions



## Contact

### Meggitt Controls

12838 Saticoy St  
North Hollywood  
California 91605-3505  
USA

Telephone: (818) 765-8160  
FAX: (818) 759-2194

[www.meggitt.com](http://www.meggitt.com)

## Meggitt Control Systems

### Our product competencies & services:

Aerospace valves | Thermal management solutions | Environmental control systems | Electro-mechanical products  
Ground fueling products | Energy products | Aftermarket services

**MEGGITT**  
smart engineering for  
extreme environments