



# NEWCO Gate, Globe, and Check Valves

Complete line of cast, forged, and stainless steel valves  
in a full range of sizes and classes

# Forged Steel Valves

## Gate valves

- ¼ to 2 in [5 to 50 mm]
- Classes 150 to 4500
- API Spec 602 design
- Flanged, threaded, socket-weld (SW), and BW ends
- A105, LF2, and alloy-grade materials

Forged steel valves are ideal for standard and critical industry applications. The welded bonnet joint eliminates the body-bonnet flanges, reducing weight and simplifying the application of exterior insulation. The welded bonnet ensures containment of the high-pressure applications experienced within the industry. This, in concert with the forged steel body, provides the highest-integrity sealing available.

Forged steel bolted- and welded-bonnet NEWCO valves are ideal for bidirectional flow and tight shutoff. Because of the flow characteristics of the wedge-to-seat design, gate valves should be operated in the full-open or full-closed position. Gate valves are used in applications where minimum pressure drop is desired.



## Globe valves

- ¼ to 2 in [5 to 50 mm]
- Classes 150 to 4500
- API Spec 602 design
- Flanged, threaded, SW, and BW ends
- A105, LF2, and alloy-grade materials

Forged steel bolted- and welded-bonnet globe valves are ideal for unidirectional, controlled flow. The flow characteristics of a globe valve are repeatable, consistent, and easy to control at various open positions, which makes the design ideal for general flow regulation. The Y-pattern globe valves offer the same flow capabilities as standard globes but generate less turbulence and lower pressure drops.



## Check valves

- ¼ to 2 in [5 to 50 mm]
- Classes 150 to 4500
- API Spec 602 design
- Flanged, threaded, SW, and BW ends
- A105, LF2, and alloy-grade materials

Forged steel bolted and welded bonnet check valves minimize restrictions to low-velocity environments and are ideal for preventing backflow in unidirectional flow applications in horizontal or vertical flow. Piston and ball check valves with springs enable horizontal or vertical installation.



# Specifications

Floating ball valves meet or exceed industry standard requirements and are fire safe.

Basic design	ASME Spec B16.34
Flange surface finish	125 to 250 arithmetic average roughness height (AARH)
<b>Serrated</b>	
Face-to-face dimension	ASME Spec B16.10
Flanged end dimension	ASME Spec B16.5
Inspection and testing	API Specs 598 and 607
Certifications	ISO 9001, CRN, <sup>†</sup> and PED <sup>‡</sup>
<sup>†</sup> Canadian Registration Number	
<sup>‡</sup> Pressure Equipment Directive	

## Advantages

- ASME classes 150, 300, and 600
- Standard NACE MR0103 compliance
- WCB, LCC, and CF8M body material
- ISO actuator mounting pad
- Full port or reduced port
- ½- to 12-in [15- to 300-mm] size range
- Fire testing to API Spec 607 Rev. 4
- Adjustable stem packing
- Blowout-proof stem
- Locking device
- Antistatic ground
- Stainless steel trim
- Two-piece body design
- Reinforced PTFE seats



Cameron NEWCO valves are designed and manufactured to meet the current editions of industry standards and have been production tested to written procedures that include the requirements of API Spec 598, ASME Spec B16.34, and MSS SP-61. Cameron offers the GreenSeal packing system for service applications to guarantee the customer's valve is packed for low fugitive emissions. Testing indicated that cast steel gate valves with a standard body-bonnet joint gasket did not release contents to the atmosphere. The addition of our GreenSeal packing system completes our leak-proof packing solution.

NEWCO valves, properly installed and adjusted, will provide a fugitive emission seal at both the body-bonnet and stem packing. Routine stem seal maintenance will maintain performance for many cycles. This results in a reduction in the cost of ownership.



*GreenSeal low-emissions packing technology.*



# Services for Valves and Actuation

## Global network and local support

Cameron is well positioned to quickly and efficiently deliver total aftermarket support with unmatched OEM expertise. Our highly skilled engineers and technicians are available around the clock to respond to customer queries, troubleshoot problems, and offer reliable solutions.

## Easily accessible parts and spare valves

- OEM spare valves, actuators, and parts (including non-Cameron brands)
- Handling, storage, packaging, and delivery
- Dedicated stocking program

## Comprehensive services portfolio

- Parts and spare valves
- Repair
- Field services
- Preventative maintenance
- Equipment testing and diagnostics
- Remanufacturing
- Asset preservation
- Customer property management
- Training and recertification services
- Warranty

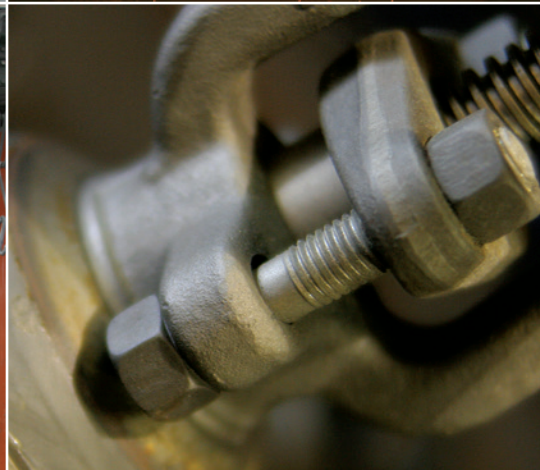
## Customized total valve care programs

Our customized asset management plans optimize uptime, availability, and dedicated services.

- Engineering consultancy
- Site management
- Flange management
- Startup and commissioning
- Spare parts and asset management
- Operational support



# NEWCO Gate, Globe, and Check Valves



[products.slb.com/newco](https://products.slb.com/newco)

\*Mark of Schlumberger  
Other company, product, and service names  
are the properties of their respective owners.  
Copyright © 2018 Schlumberger. All rights reserved. 18-VL-380086

 **CAMERON**  
A Schlumberger Company